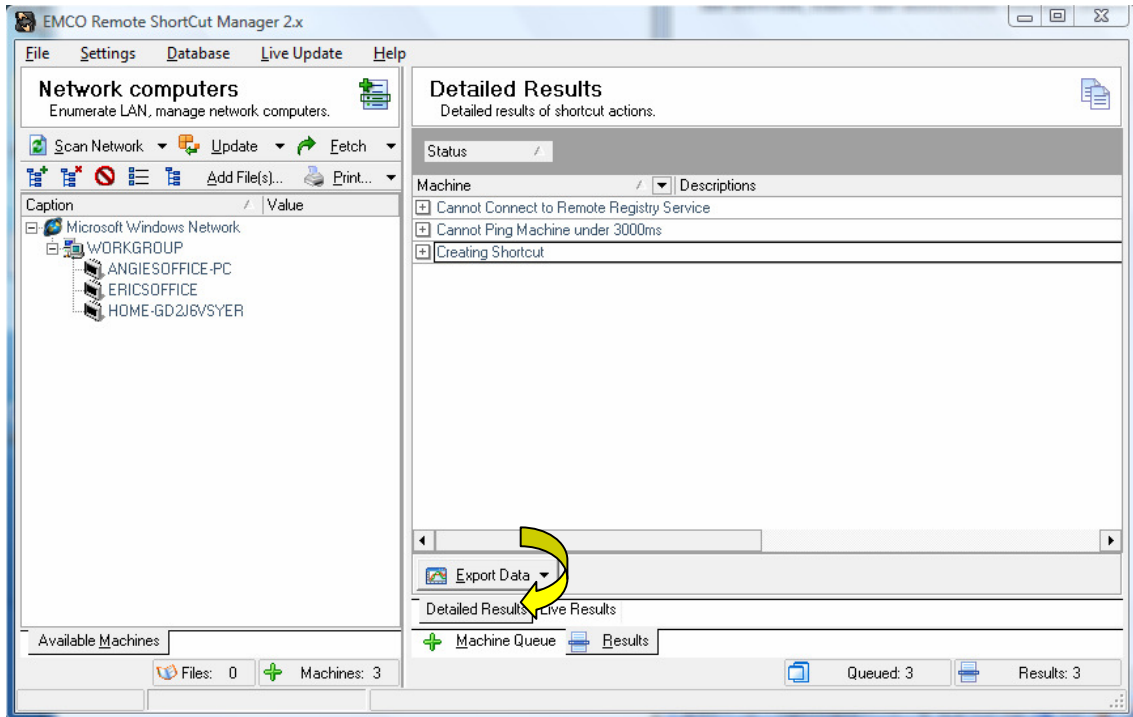




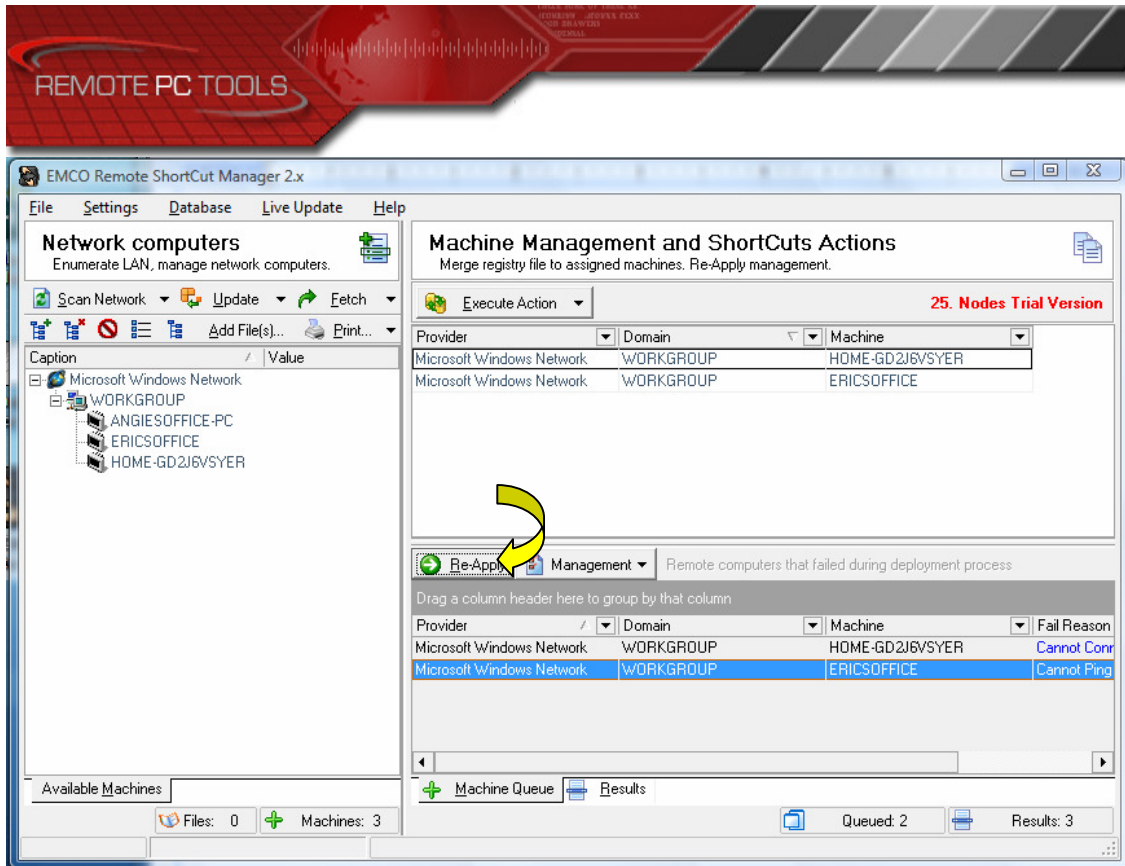
How to Re-Apply Failed Action for the same Networked Computers

If you have created a shortcut but it failed to create itself on one or more of the machines on the network, follow the instructions outlined below to reapply the settings.

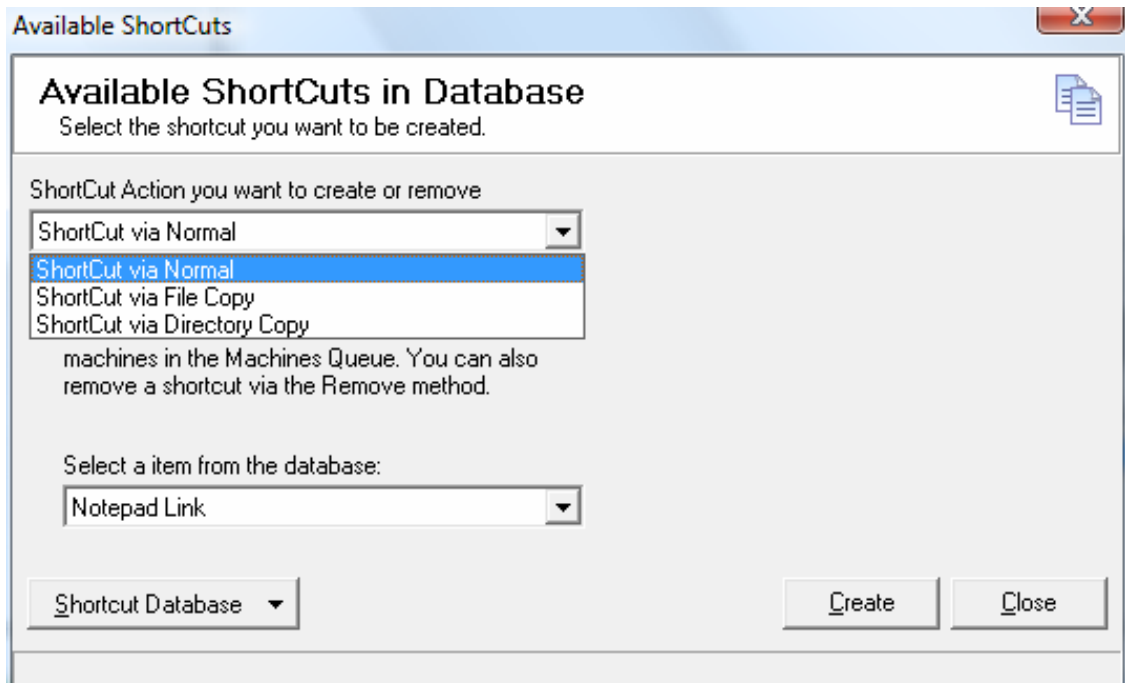
1. Click the **Machine Queue** tab.



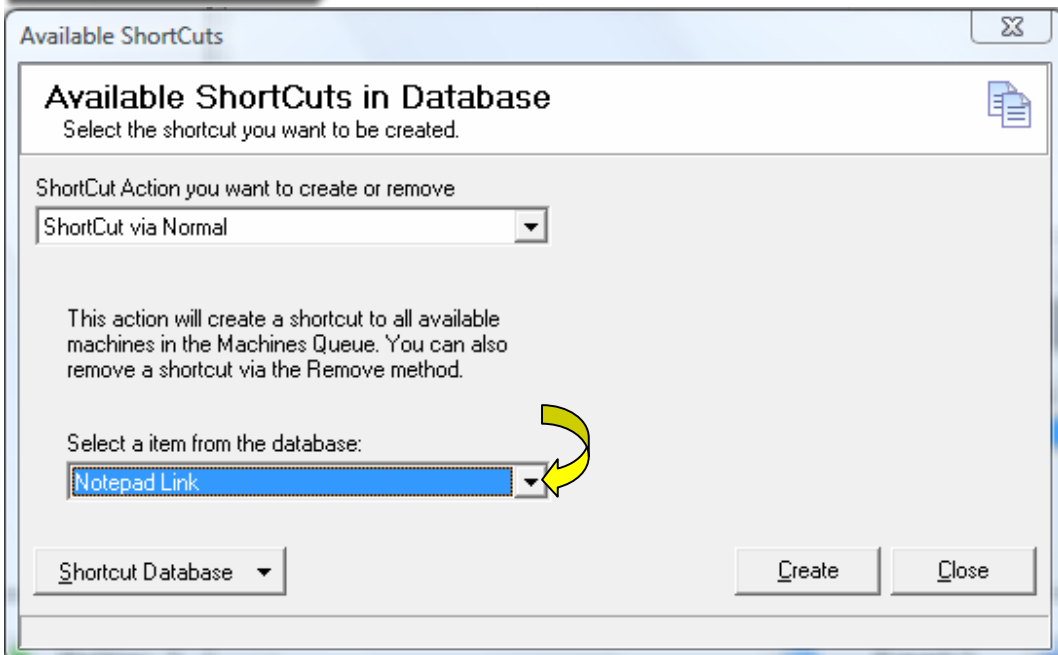
2. Select the **Re-Apply** button.



3. Select the **ShortCut Action** you want from the drop down menu.



4. Select the item from the drop down menu that you want to make the shortcut to.



5. Click the **Create** button.