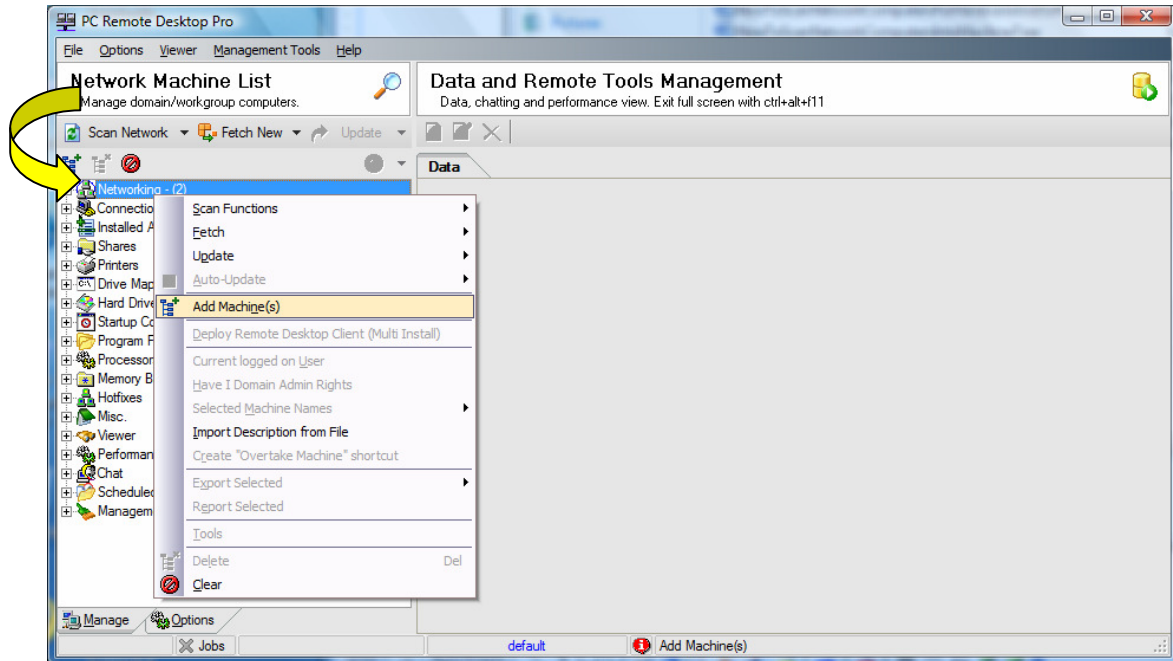


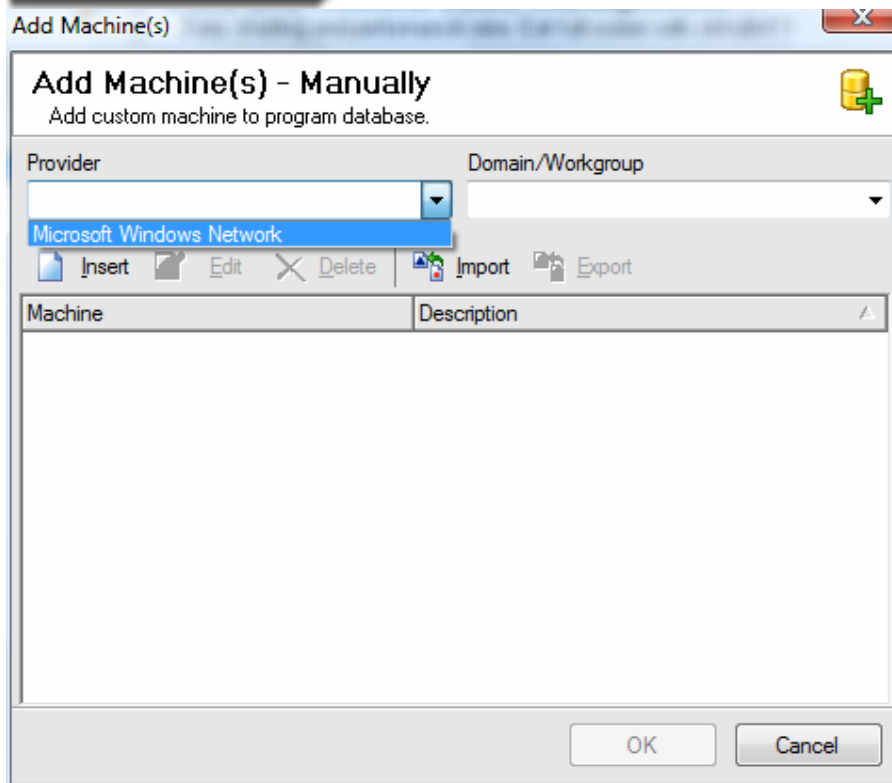


1. Right-click the **Networking** icon.

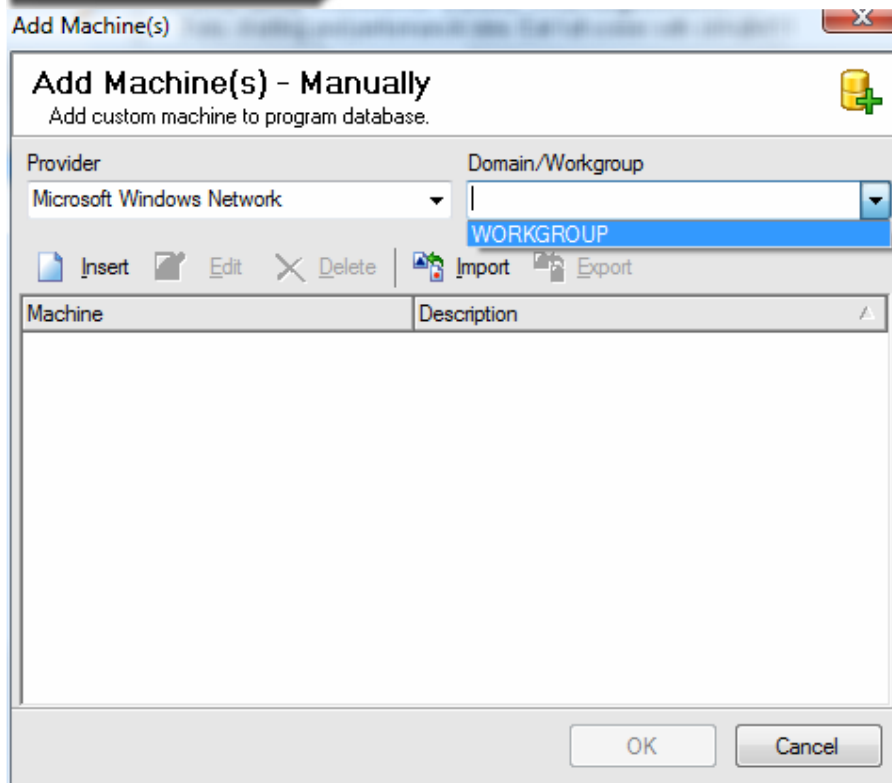
2. Select **Add Machine(s)**.



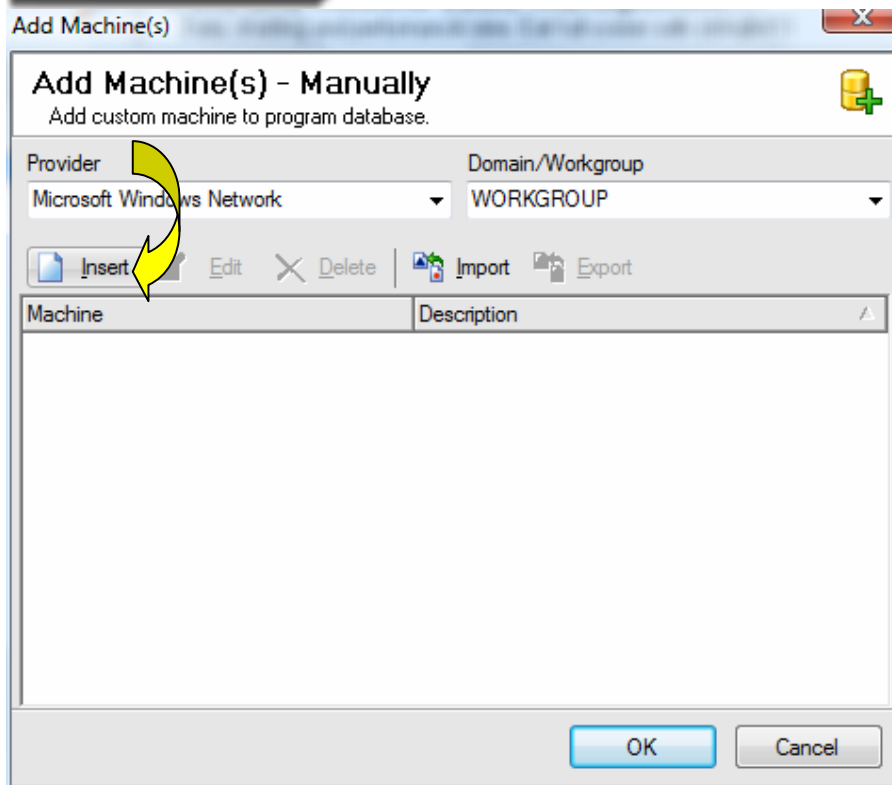
3. Select the **Provider** from the drop down menu or type your own Provider in the box.



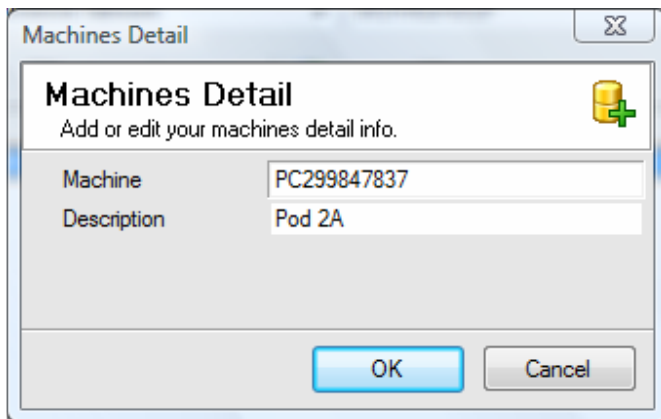
4. Choose the **Domain/Workgroup** from the drop down menu or type it into the appropriate box.



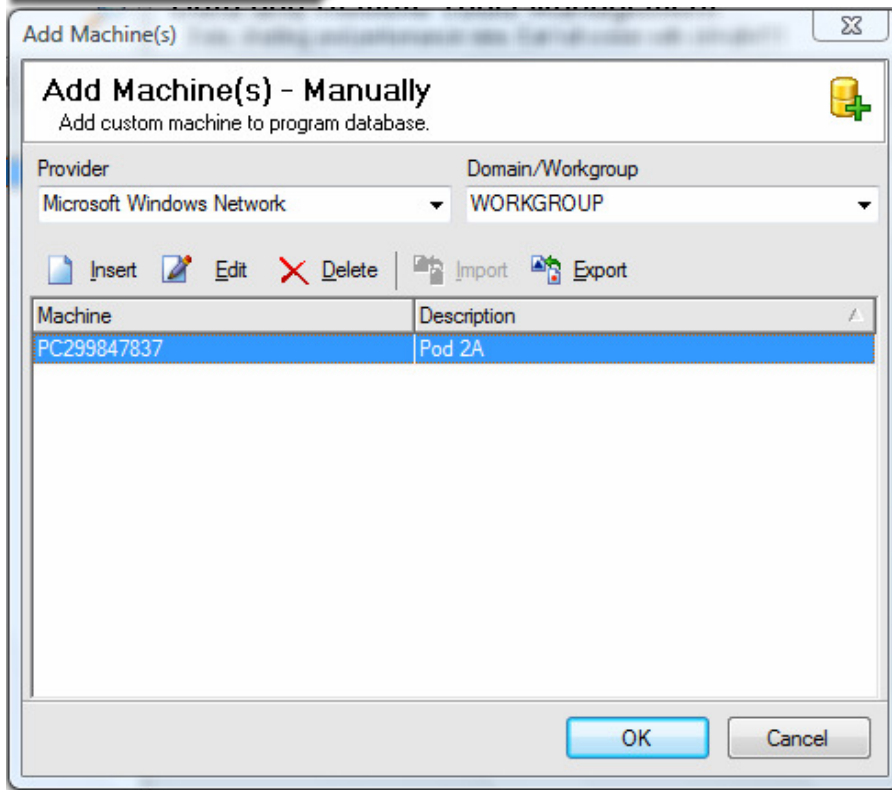
5. Select the **Insert** button.



6. Enter the **Machine Name**.
7. Enter a **Machine Description**.



8. Click **Ok**. The machine should now be listed similar to the one shown below.



9. Click **Ok**.