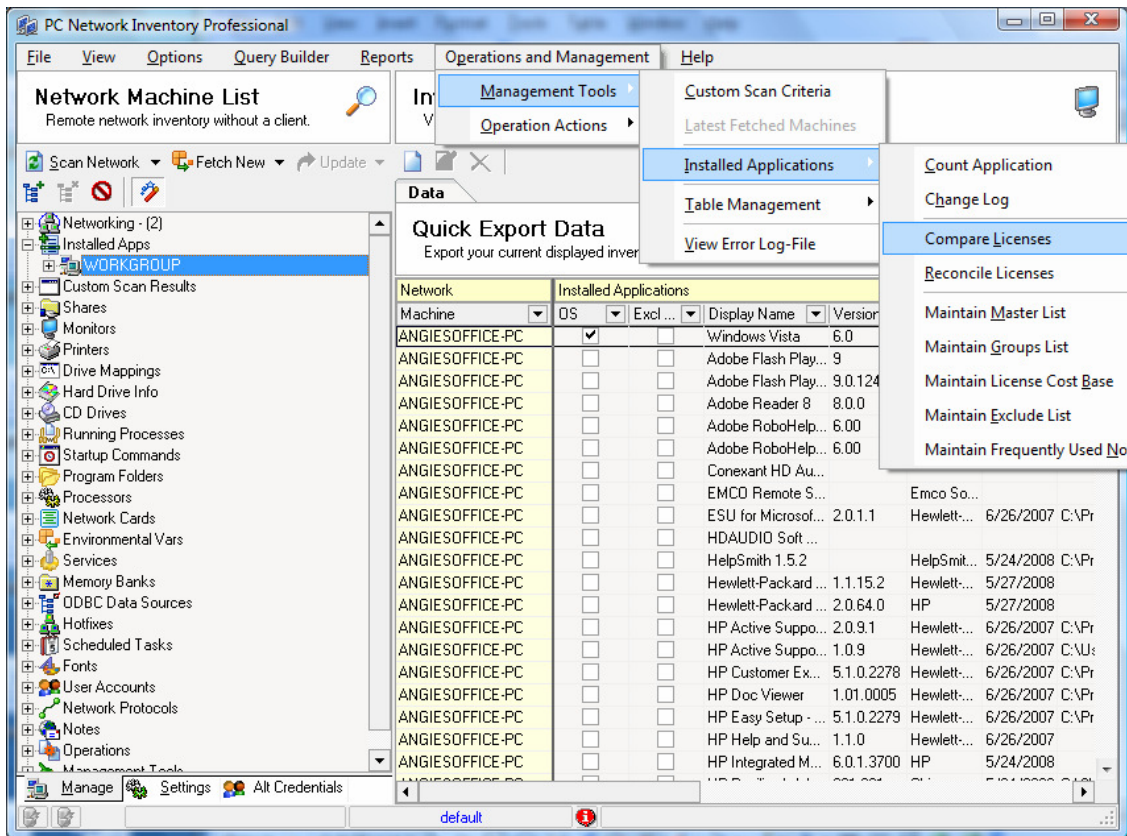


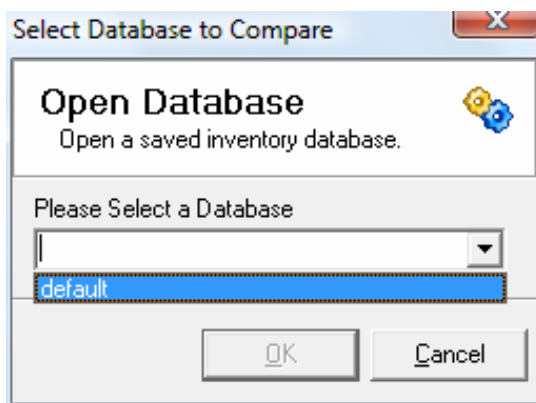


How to use Compare Licenses

1. Select **Operations and Management > Installed Applications > Compare Licenses**.



2. Select the Database from the drop down menu and click **Ok**.



3. A report similar to the one below will appear.



Compare Licenses

Application	Version	Total in Current DB	Total in other DB
Adobe Flash Player 9 ActiveX	9	0	1
Adobe Flash Player Plugin	9.0.124.0	0	1
Adobe Reader 8	8.0.0	0	1
Adobe RoboHelp 6.0	6.00	0	1
Conexant HD Audio		0	1
EMCO Remote ShortCut Manager 2.x		0	1
ESU for Microsoft Vista	2.0.1.1	0	1
HDAUDIO Soft Data Fax Modem with SmartCP		0	1
HeloSmith 1.5.2		0	1
Hewlett-Packard Active Check for Health Check	1.1.15.2	0	1
Hewlett-Packard Asset Agent for Health Check	2.0.64.0	0	1
HP Active Support Library	2.0.9.1	0	1
HP Active Support Library 32 bit components	1.0.9	0	1
HP Customer Experience Enhancements	5.1.0.2278	0	1
HP Doc Viewer	1.01.0005	0	1
HP Easy Setup - Frontend	5.1.0.2279	0	1
HP Helo and Support	1.1.0	0	1
HP Integrated Module with Bluetooth wireless technology	6.0.1.3700	0	1
HP Pavilion Webcam Driver for Vista v061.001.00006	061.001.00006	0	1
HP Photosmart Essential 2.0	2.0	0	1
HP Photosmart Essential 2.5	1.00.0000	0	1
HP Quick Launch Buttons 6.10 B9	6.10 B9	0	1
HP QuickPlay 3.2		0	1
HP Update	4.000.005.00	0	1
HP User Guides 0083	1.00.0000	0	1
HP Wireless Assistant	3.00 F1	0	1
HPNetworkAssistant	1.1.70	0	1
Java(TM) SE Runtime Environment 6	1.6.0.0	0	1
Kaspersky Anti-Virus 7.0	7.0.1.325	0	1
LightScribe 1.4.136.1	1.4.136.1	0	1
Microsoft .NET Framework 1.1	1.1.4322	0	1
Microsoft Office FrontPage 2003	11.0.5614.0	0	1
Microsoft Office Professional Edition 2003	11.0.5614.0	0	1
Microsoft Visual C++ 2005 Redistributable	8.0.56336	0	1