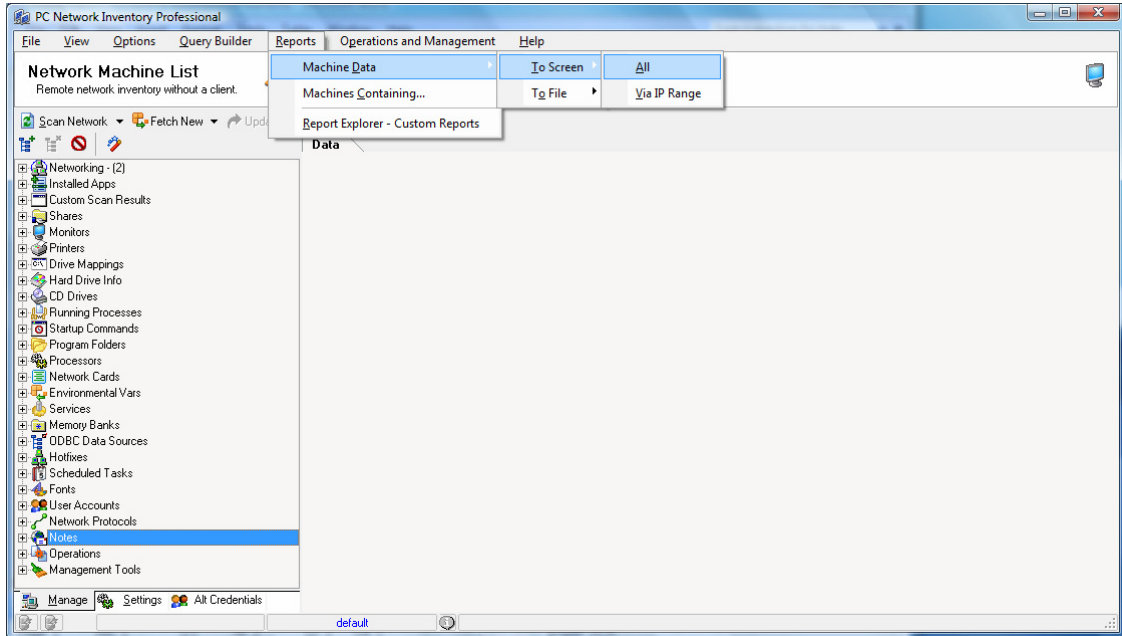


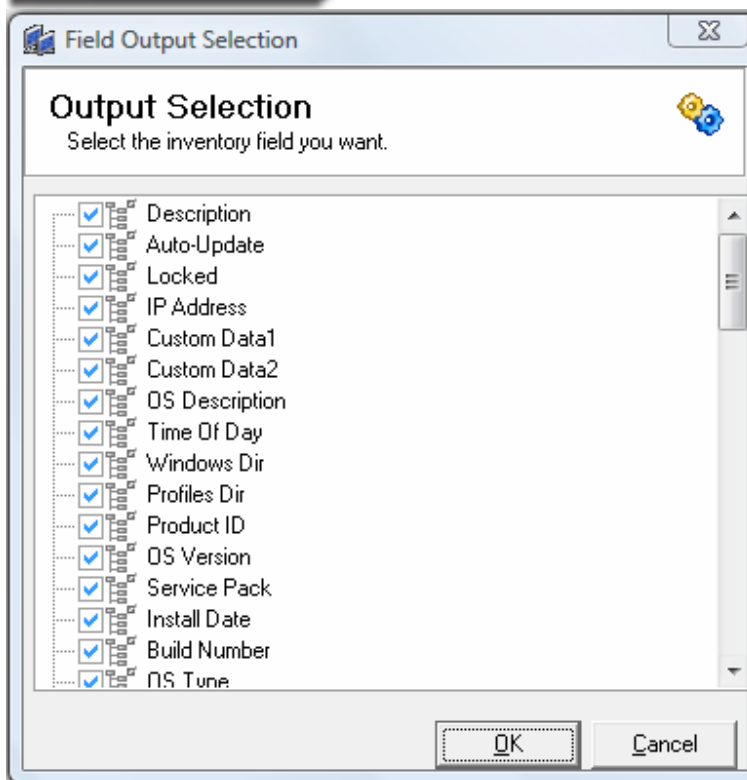


Report Hardware Information to Screen

1. Select Machine Data > To Screen > All.



2. The Field Output Selection window will appear. Add or remove checkmarks next to the software and/or hardware items you would like to include and/or exclude from the report.



3. Click **Ok**.

4. A report similar to the one shown below will appear.

Machine Datatree

Microsoft Windows Network

WORKGROUP

ANGIESOFFICE-PC

ANGIESOFFICE-PC

Description	
Auto-Update	False
Locked	False
IP Address	192.168.0.100
Custom Data1	
Custom Data2	
OS Description	
Time Of Day	5/31/2008
Windows Dir	C:\Windows
Profiles Dir	C:\Users
Product ID	89578-OEM-7332157-00061
OS Version	Windows Vista
Service Pack	
Install Date	7/18/2007
Build Number	6000
OS Type	Workstation
BIOS Name	PhoenixBIOS 4.0 Release 6.1
BIOS Manufacturer	Hewlett-Packard
Bios Serial No	2CE7290B50
BIOS Version	HP00RM - 6040000
BIOS SMB Version	F.34
BIOS SMB Major Version	2
BIOS SMB Minor Version	4
Monitor Type	Generic PnP Monitor
Physical Memory (MB)	1998
Available Memory (MB)	932
Computer System Name	Hewlett-Packard HP Pavilion dv2000 (GA537UA#ABA)
Modem	HDAUDIO Soft Data Fax Modem with SmartCP
MAC Address:	001A73774B86
Video Card	NVIDIA GeForce Go 6150
System Uptime	Up time 14 Hours, 16 Minutes, 47 Seconds
Resolution	
Default Language	English (United States)
Digital ProductID	2R6WF-KYF88-27HYQ-XTKW2-WQD8Q
Office ProductID	PYYR-WR6M-MG2TR-RC4MV-72OHM
Current User:	AnziesOffice
Auto-Admin Logon	<input type="checkbox"/>
Default User	
Scan Area Date	5/31/2008

Logged-on User Info

User Name	AnziesOffice@AnziesOffice-PC
Screen Saver	True
Screen Svr Secure	False
Screen Svr Timeout	600
Screen Svr Exe	C:\Windows\system32\logon.scr
Programs Dir	C:\Users\AnziesOffice\AppData\Roaming\Microsoft\Windows\Start Menu\Progr