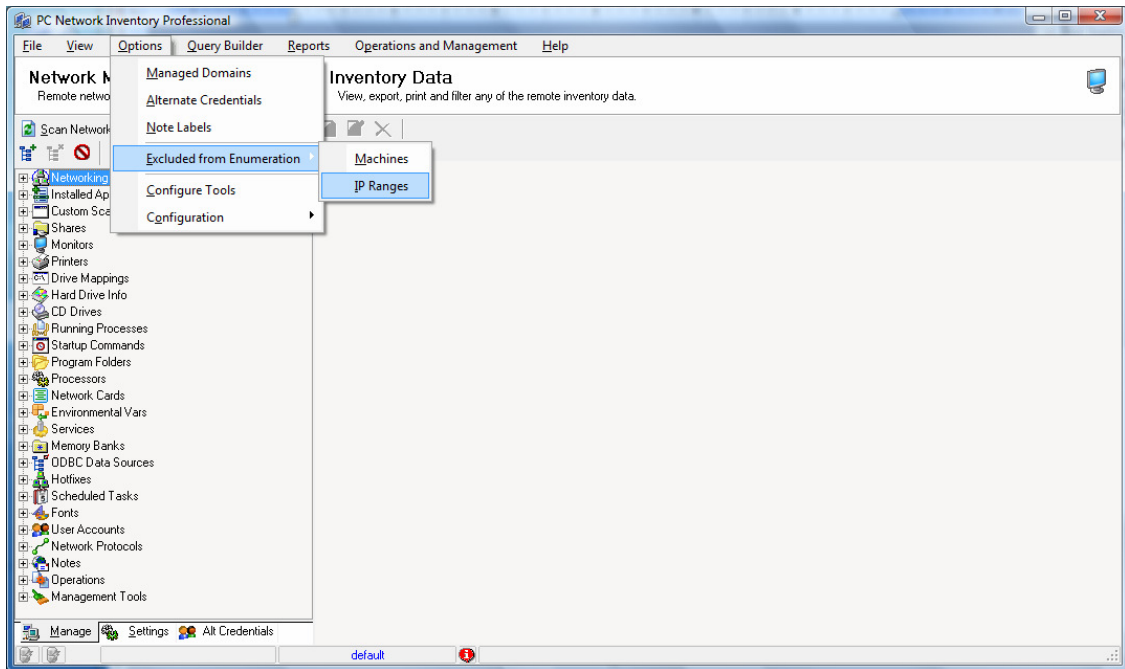


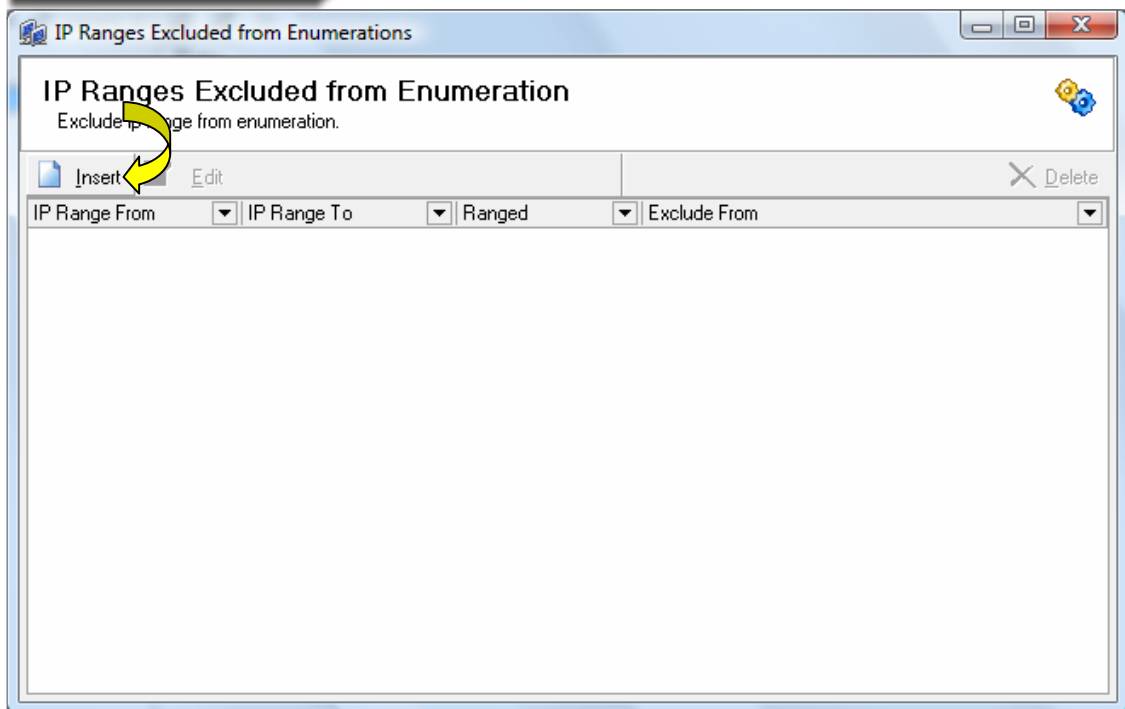


## How to exclude IP Addresses from being scanned

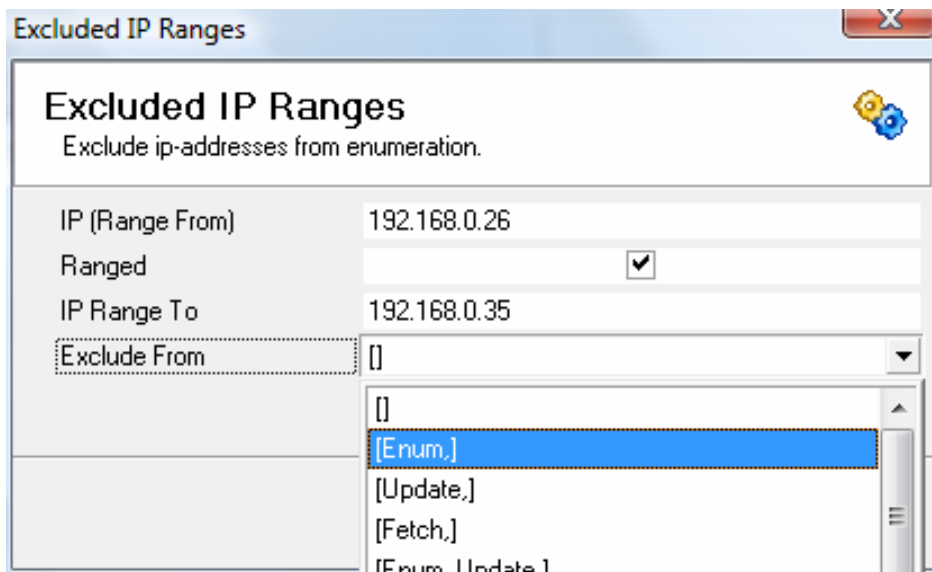
1. Select **Options > Excluded from Enumeration > IP Ranges**.



2. Click **Insert**.



3. Enter the **IP Address** you want to start excluding.
4. Place a checkmark in the **Ranged** checkbox.
5. Type the ending **IP Address** range.
6. Select from the drop down menu what you want to exclude these machines from.





7. Click **Ok**.