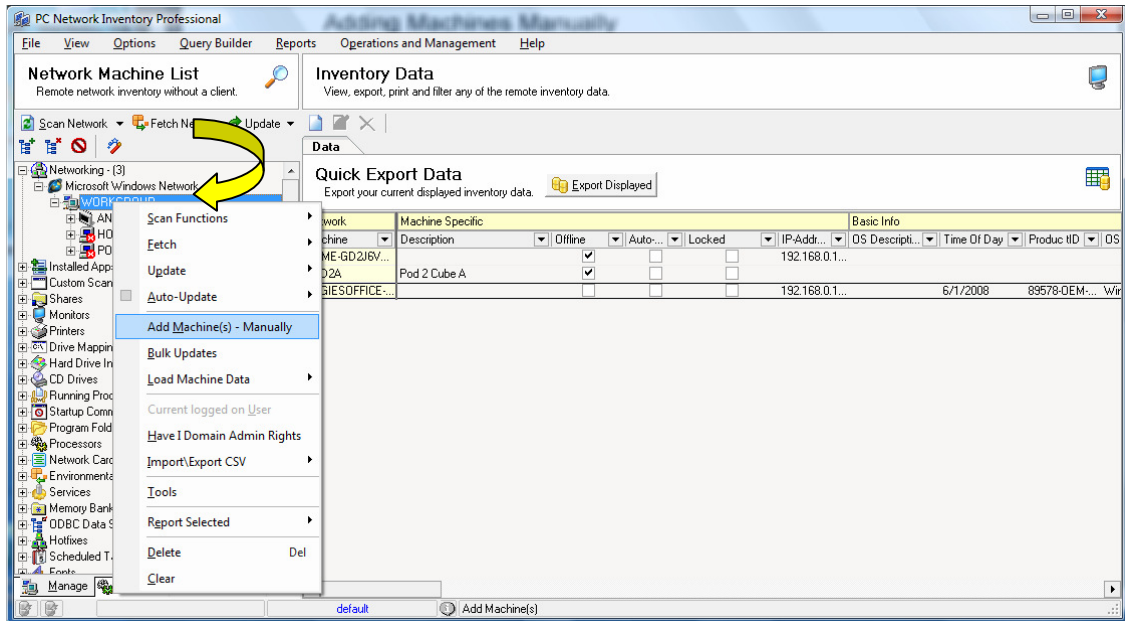


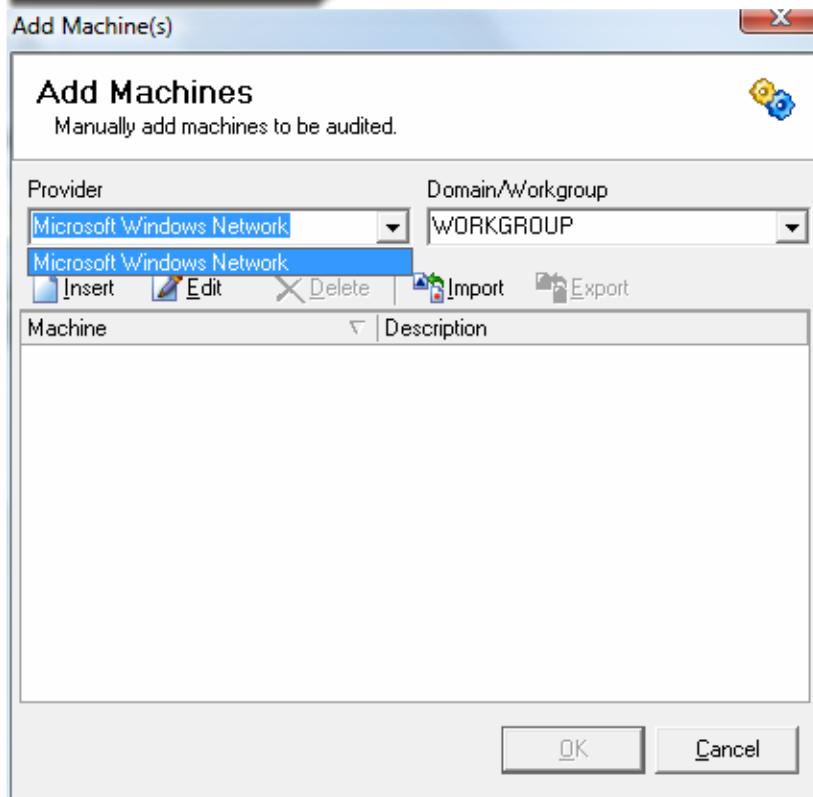


## How to Add Network Computers Manually to the Machine Tree

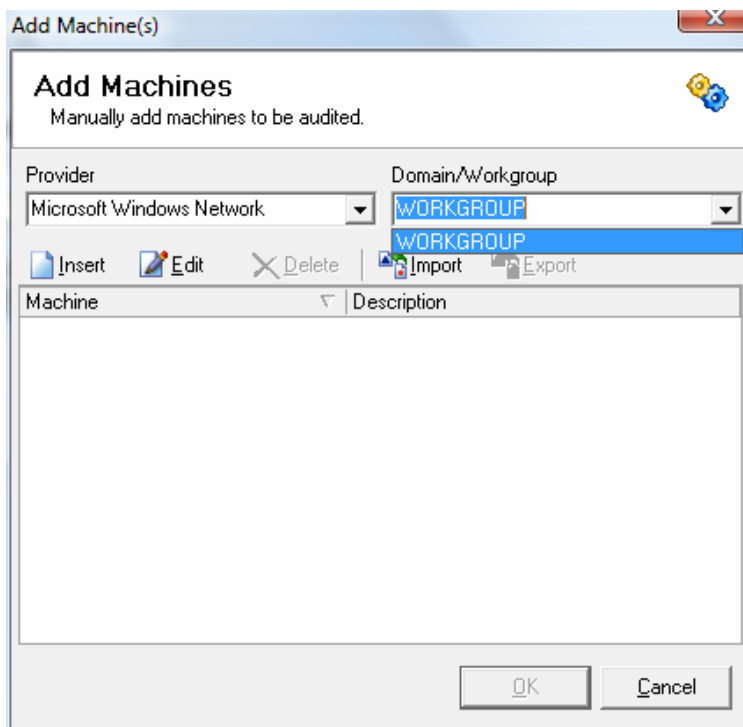
1. Click the '+' to expand the Networking icon.
2. Right-click on the Domain/Workgroup and select **Add Machine(s) – Manually**.



2. Select the Provider from the drop down menu.

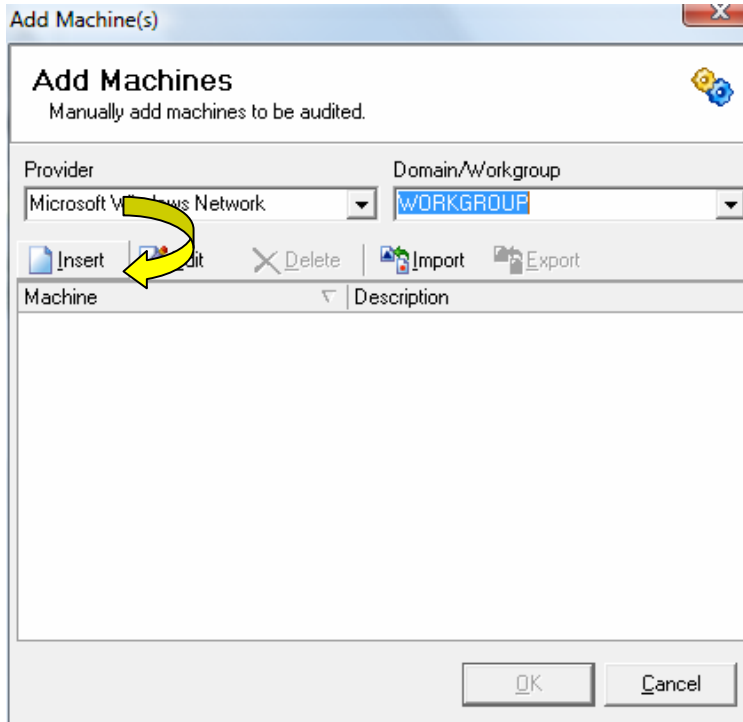


3. Select the Domain/Workgroup from the drop down menu.



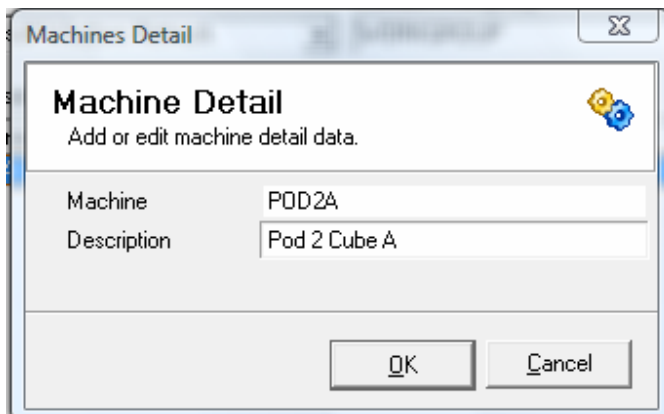


4. Click the **Insert** button.



5. Enter the machine name in the Machine Details screen.

6. Type a Description if necessary.



7. Click **Ok** when finished.

8. You can now see that the machine has been added. If you look expand the Networking icon as you did in Step 1 you should now see the additional stations.



