



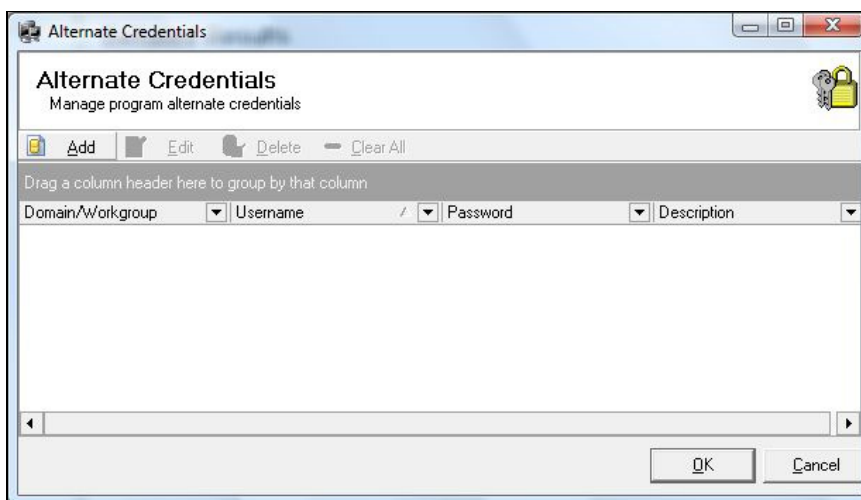
How to Use Alternate Credentials

PC Network Deploy enables you to manage alternative credentials that you can use while performing different scan operations on different nodes on your network. The instructions below step through adding a credential to the program.

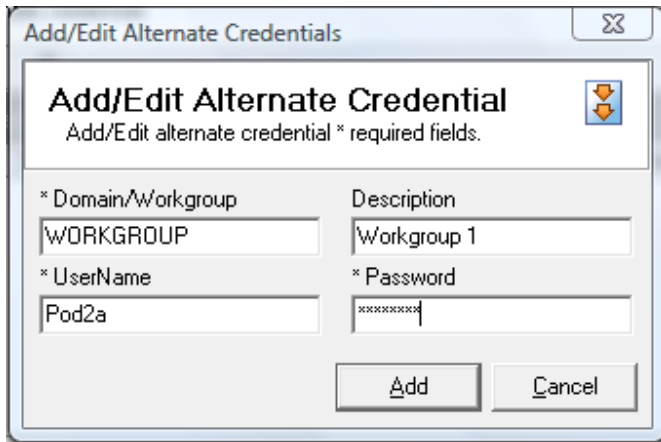
1. Select **Settings > Alternate Credentials**.



2. Click the **Add** button.



3. Type a *Domain/Workgroup*.
4. Enter a *Description*.
5. Type a *UserName*.
6. Enter a *Password*.
7. Click the **Add** button.



8. You will now see that the Alternate Credential has been added.
9. Click the **Ok** button.

