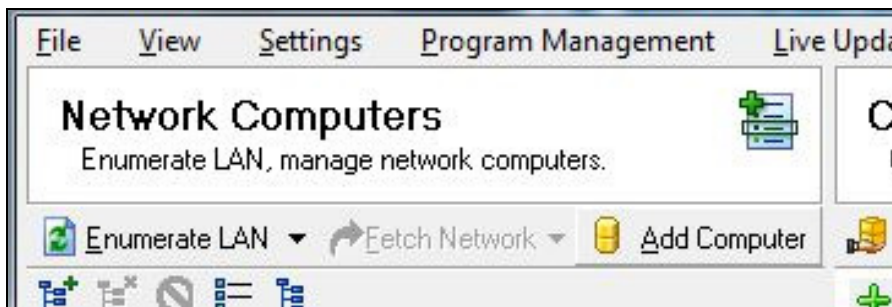




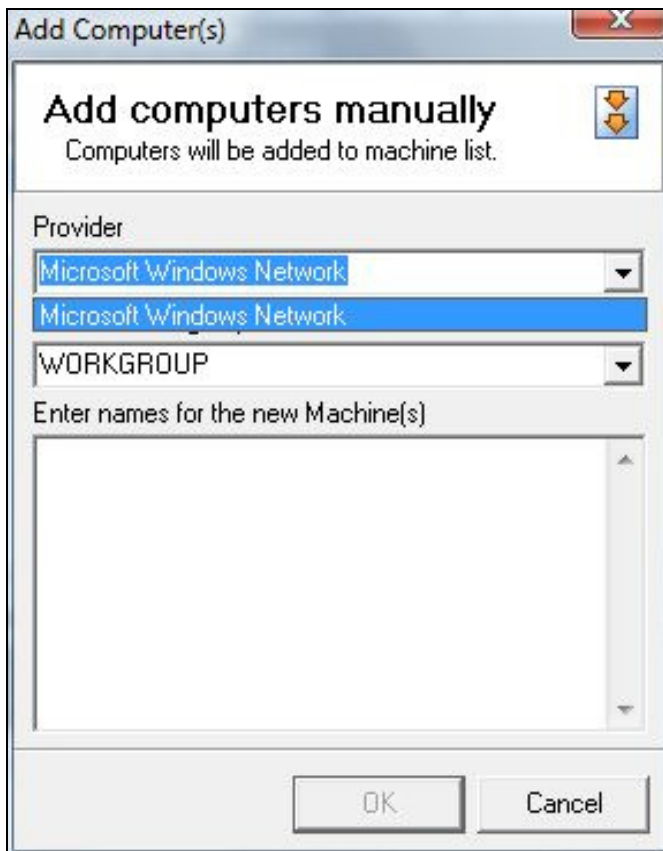
## How to Manually Add Computer to the Network

If you have scanned the network and you find that you need to add an additional computer that is not showing in the network tree you can follow the instructions listed below to manually add a machine to the network.

1. Click the **Add Computer** button.

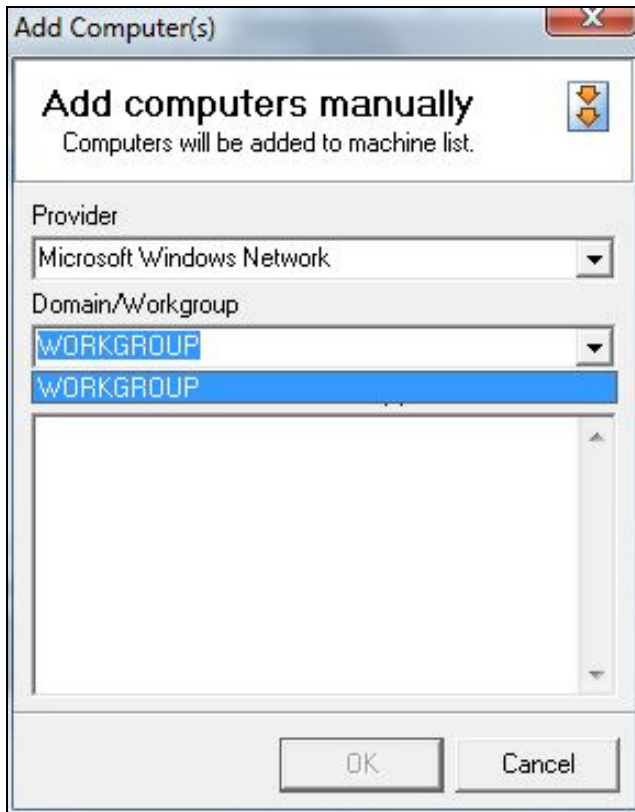


2. Select a *Provider* from the drop down menu or type your own into the box provided.

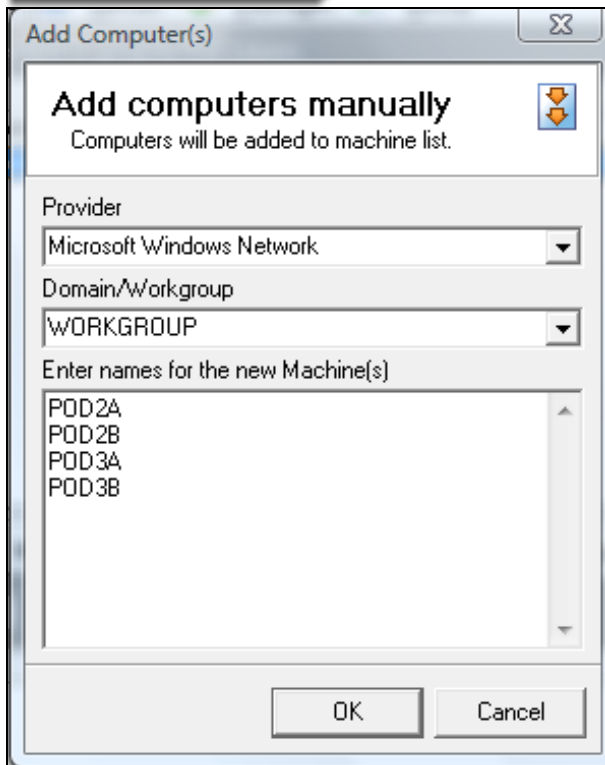




3. Select a *Domain/Workgroup* from the drop down list or type your own in the box provided.



4. Type in the *name of the computer(s)* you want to add manually into the box provided.



5. Click **Ok** when finished.

6. You can see that the computer(s) have now been added to the network tree as shown below.

