

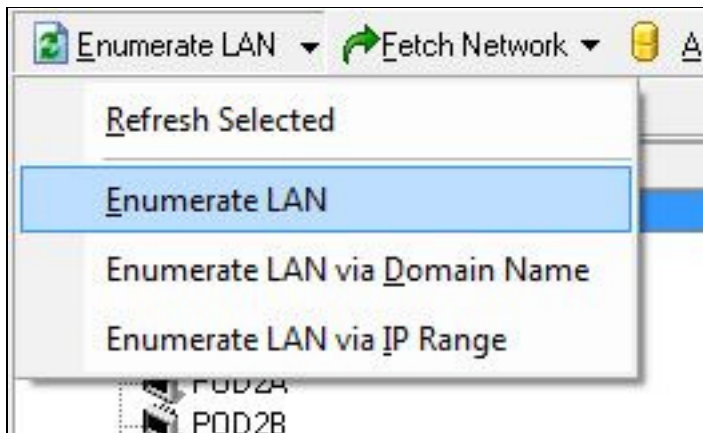


How to Scan the Network for Computers

Remote PC Deploy can scan the network for [all available computers](#), [available computers on a specific domain](#), and also [computers available within a specific IP Address range](#).

Scan for All Available Machines

1. Select **Enumerate LAN > Enumerate LAN**.



2. The system will scan the network and the available machines will be listed under the network tree, similar to the example below.

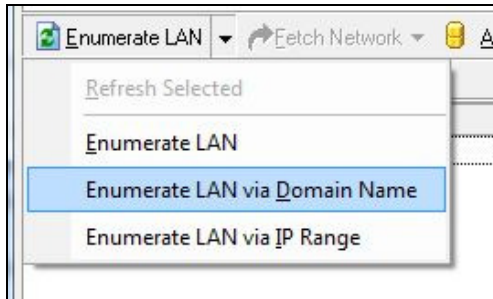


Scan for Computers on a Domain

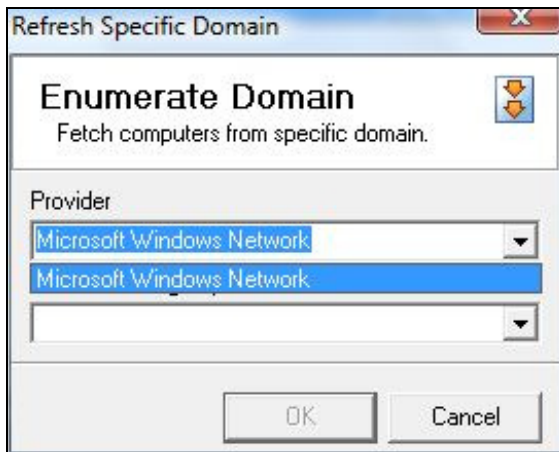




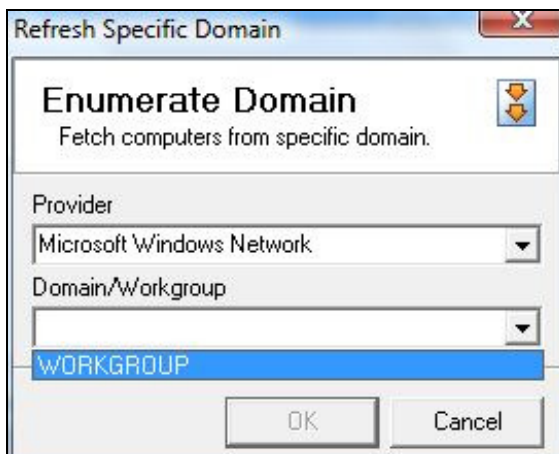
1. Select **Enumerate LAN** > **Enumerate LAN via Domain Name**.



2. Select the *Provider* from the drop down menu or type in one in the box provided.

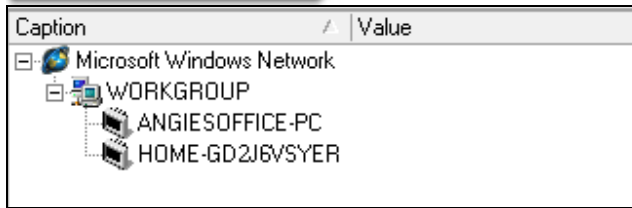


3. Choose a *Domain/Workgroup* or type one into the space provided.



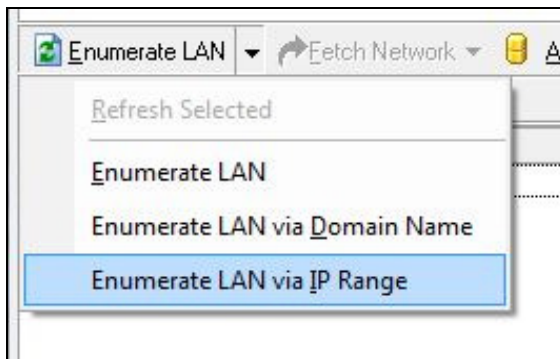
4. The available computers will be listed in the Network tree.



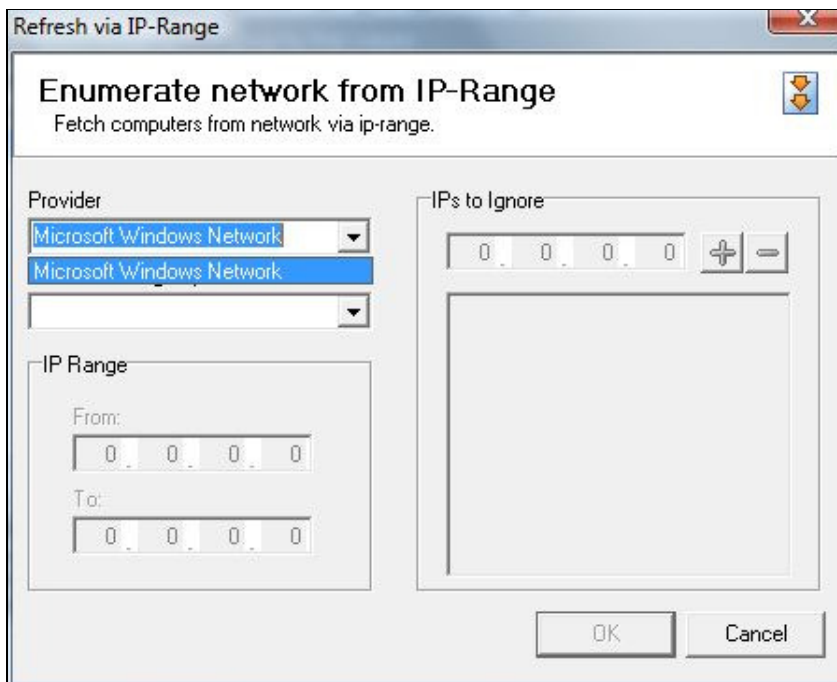


Scan for Computers using IP Address Range

1. Select **Enumerate LAN > Enumerate LAN via IP Range**.

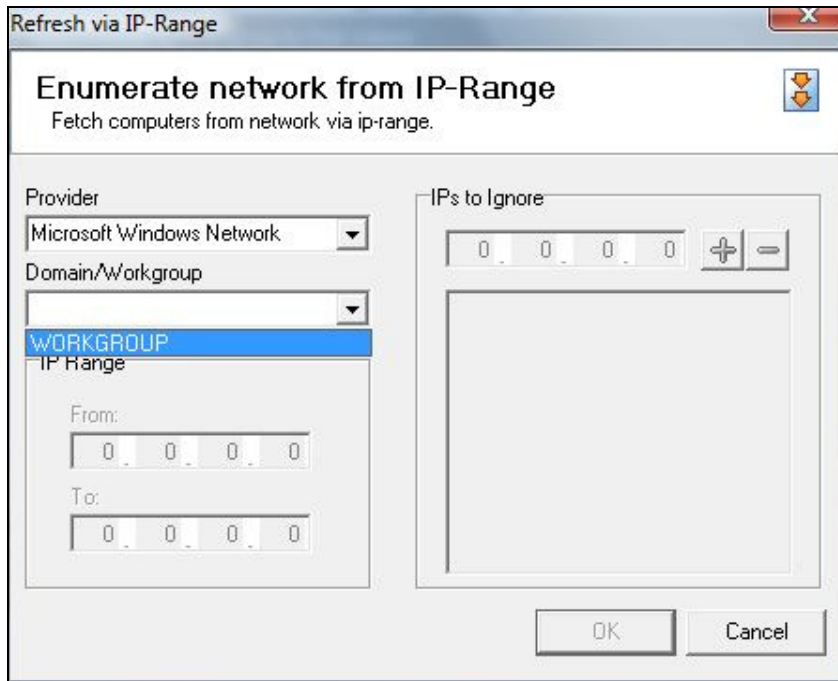


2. Select the *Provider* from the drop down list or type into the box provided.



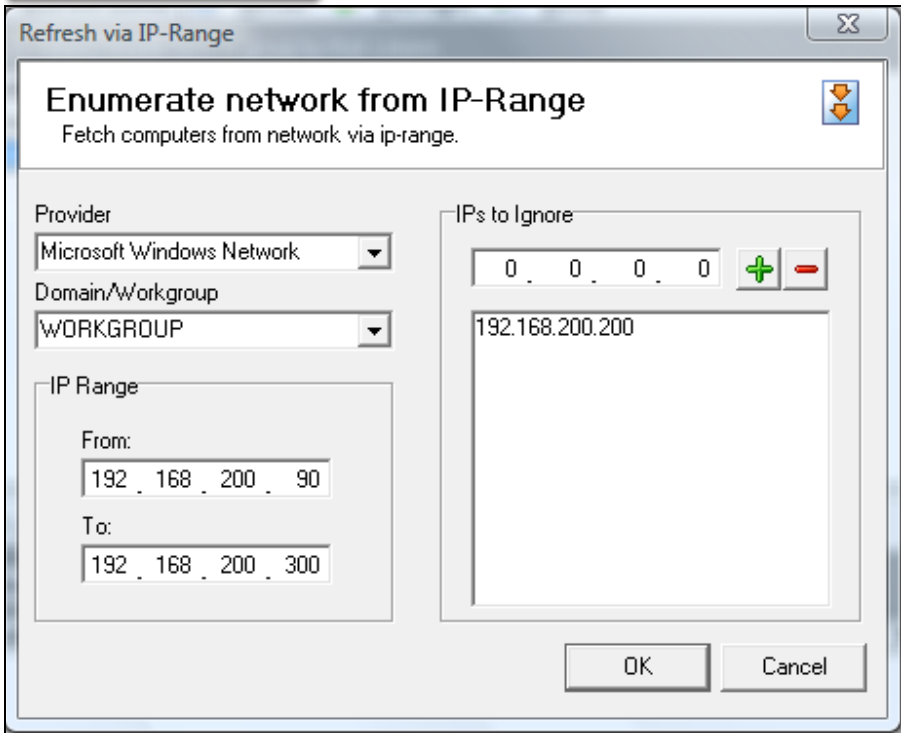


3. Choose a Domain/Workgroup or type it into the box provided.



4. Type an IP range into the areas provided.

5. If you wish to exclude certain IP addresses enter it into the IPs to Ignore window and click the '+' sign.



6. Click **Ok**.