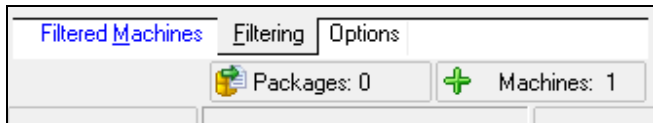




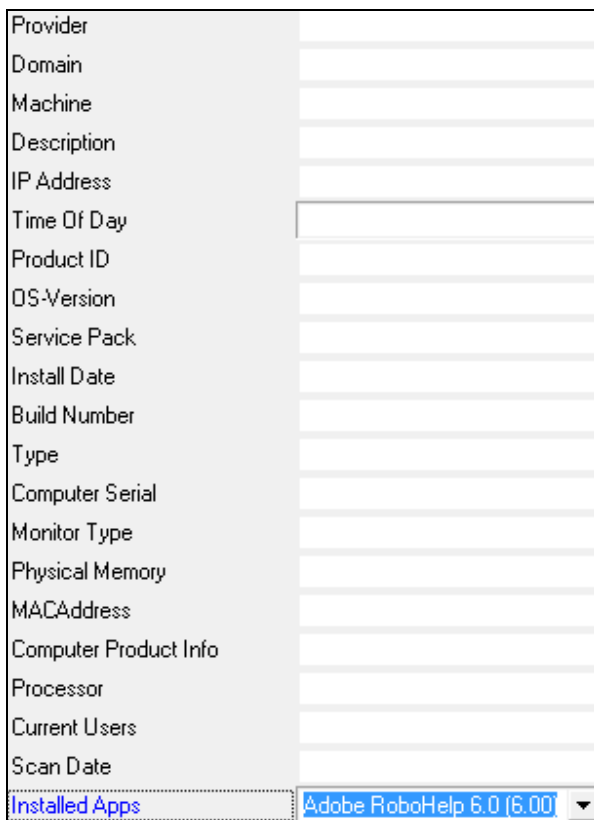
How to Scan Computers for Inventory Data and Use Filters

After you have selected the options and ran a scan you are able to filter the results of the scan by using the instructions listed below.

1. Select the **Options** and perform a scan on the workstations(s).
2. Choose the **Filtering** tab.

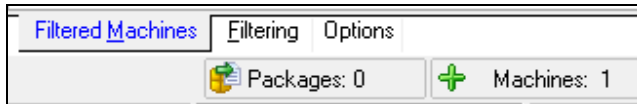


3. Select the items to filter.





4. Choose the **Filtered Machines** tab.



5. You can now see the list of machines that met the filter requirements.

Caption	Value
Microsoft Windows Network	
WORKGROUP	
ANGIESOFFICE-PC	
Computer Product Info	Hewlett-Packard HP Pavili
Current Users	AngiesOffice
IP Address	192.168.0.100
MACAddress	00:16:D3:A7:C5:08
Monitor Type	Generic PnP Monitor
Processor	~MHz: 1800 AMD Turion(t
Product ID	89578-OEM-7332157-00
Scan Date	8/7/2008
Installed Apps	