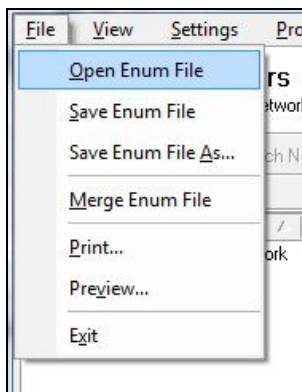




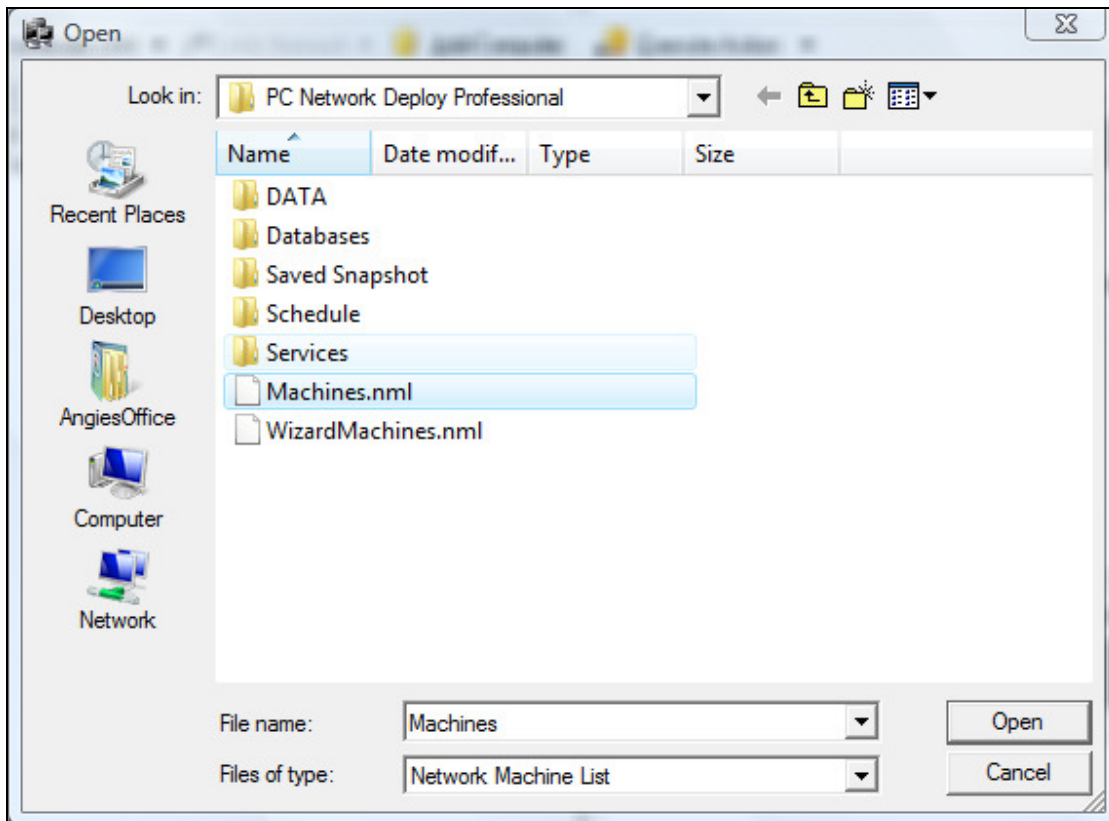
How to [Open](#), [Save](#) and [Merge](#) Network Tree Data

Open Network Tree Data

1. Select **File > Open Enum File**.



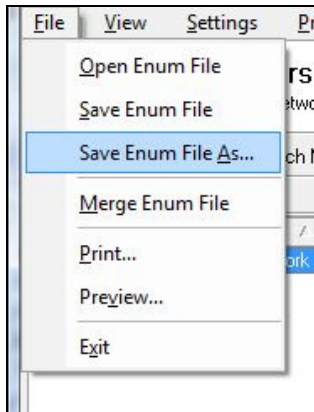
2. Select the appropriate .nml file and click **Open**.



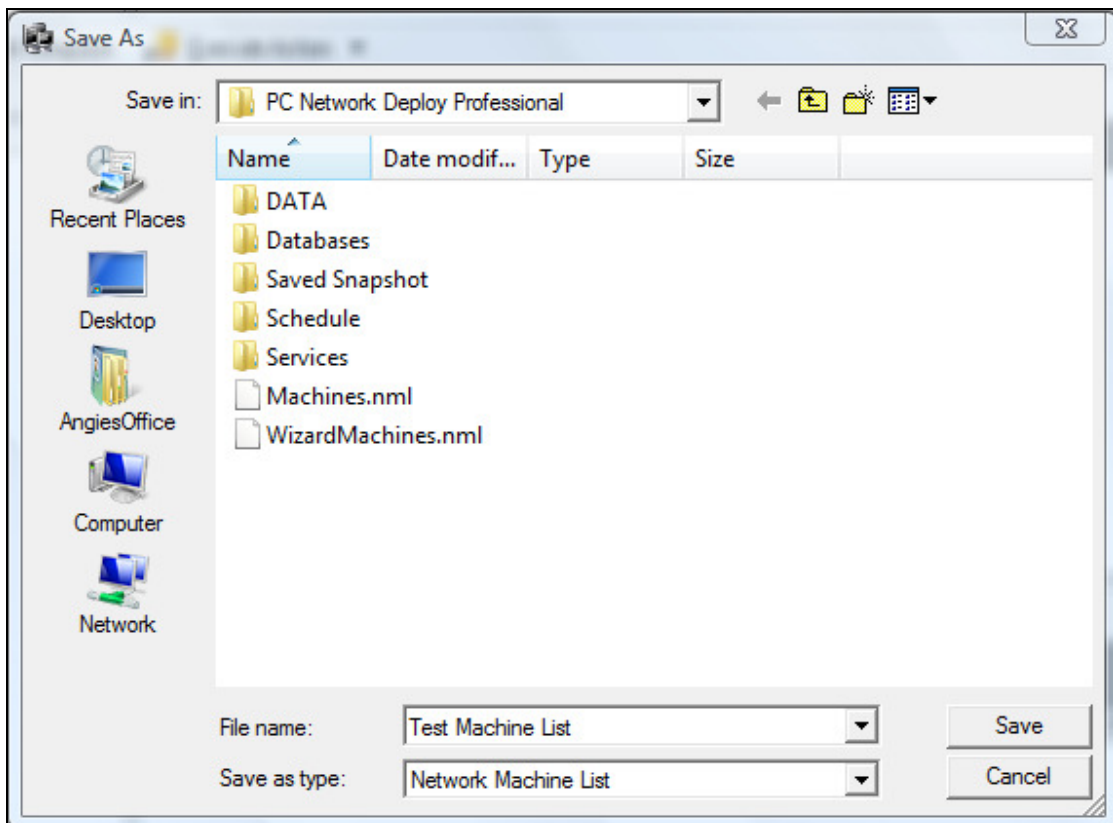


Save Network Tree Data

1. Choose **File > Save Enum File As.**



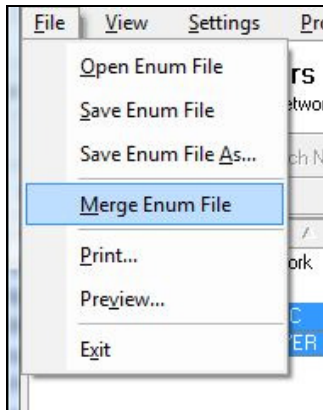
2. Select the location to save the file and click **Save.**





Merge Network Tree Data

1. Select **File > Merge Enum File**.



2. Highlight the file you want to merge.
3. Click **Open**.

