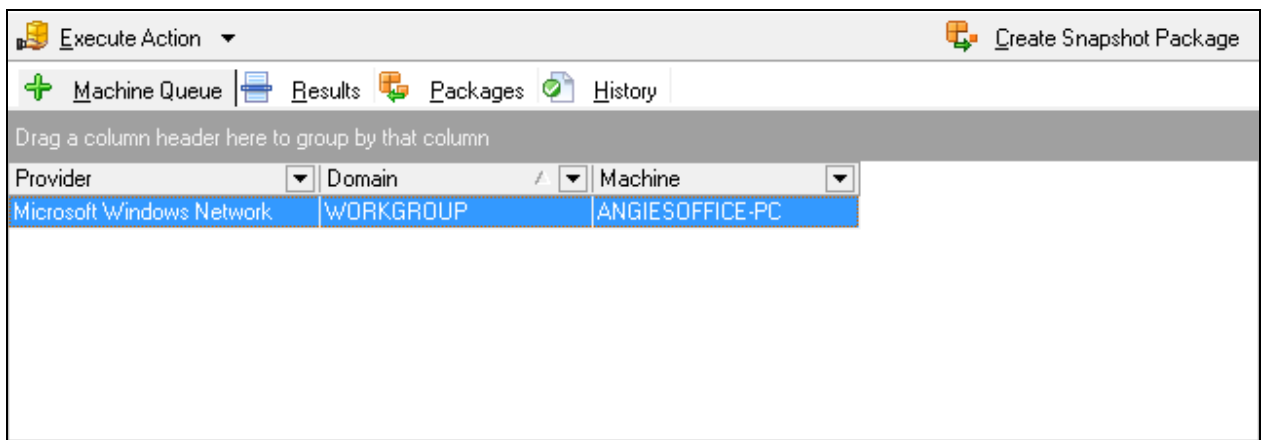




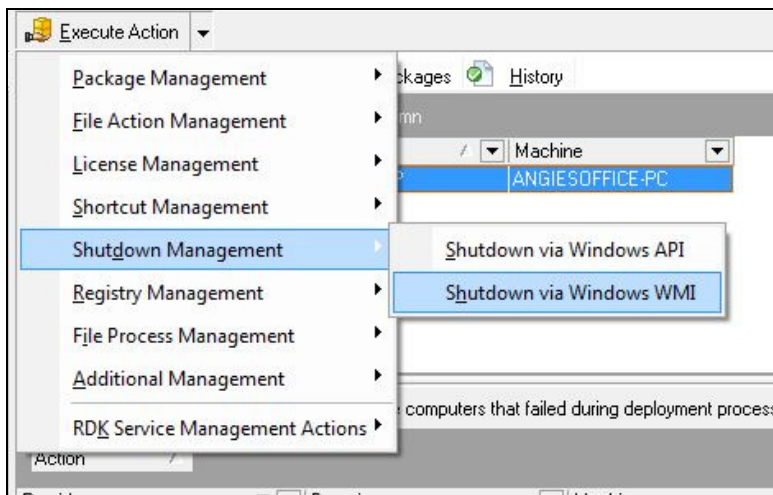
How to Manage WMI Shutdown

PC Remote Deploy combines with the Windows Management Instrumentation (WMI), to shutdown workstations on the network. WMI is a set of specifications from Microsoft for consolidating the management of devices and applications in a Windows network environment. In order to manage a WMI shutdown use the steps outlined below.

1. Drag the machines that you want to shutdown from the Network Tree and drop them into the Machine Queue.

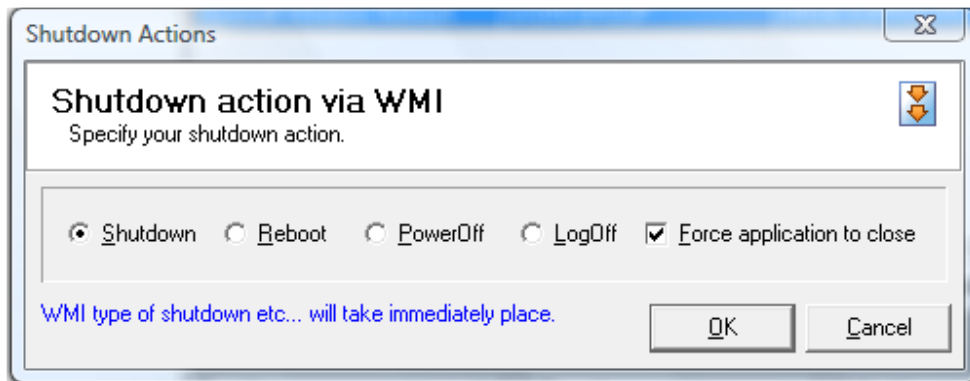


2. Choose **Execute Action > Shutdown Management > Shutdown via Windows WMI**.





3. Select the appropriate shutdown action radio button.
4. If you want to force applications to close to shutdown, place a checkmark in the appropriate checkbox.



5. Click **Ok**.