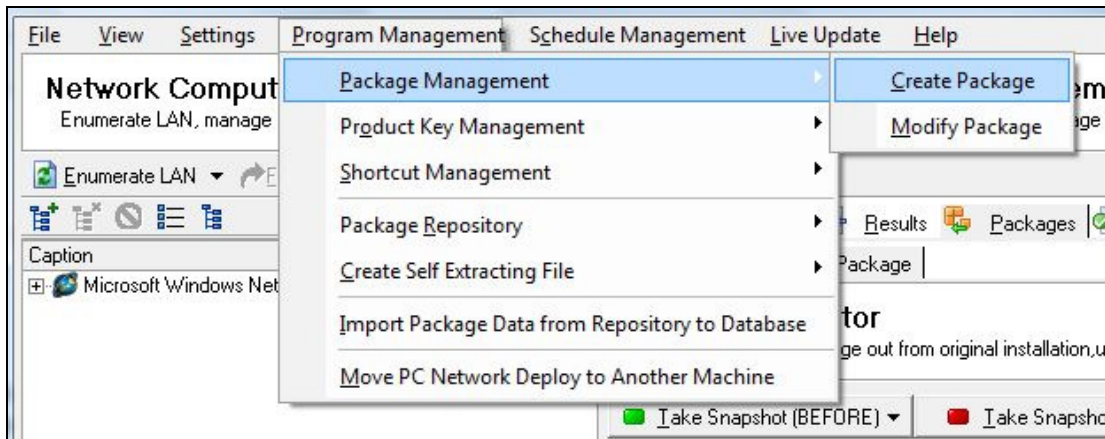


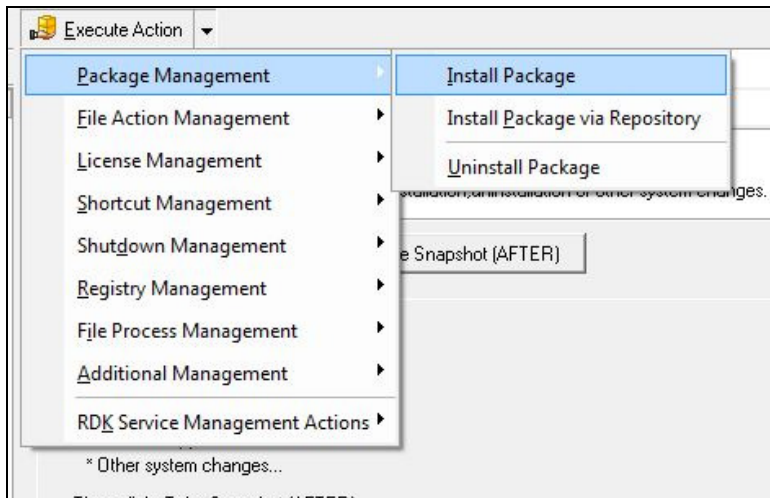


How to Install Package to Network Computers

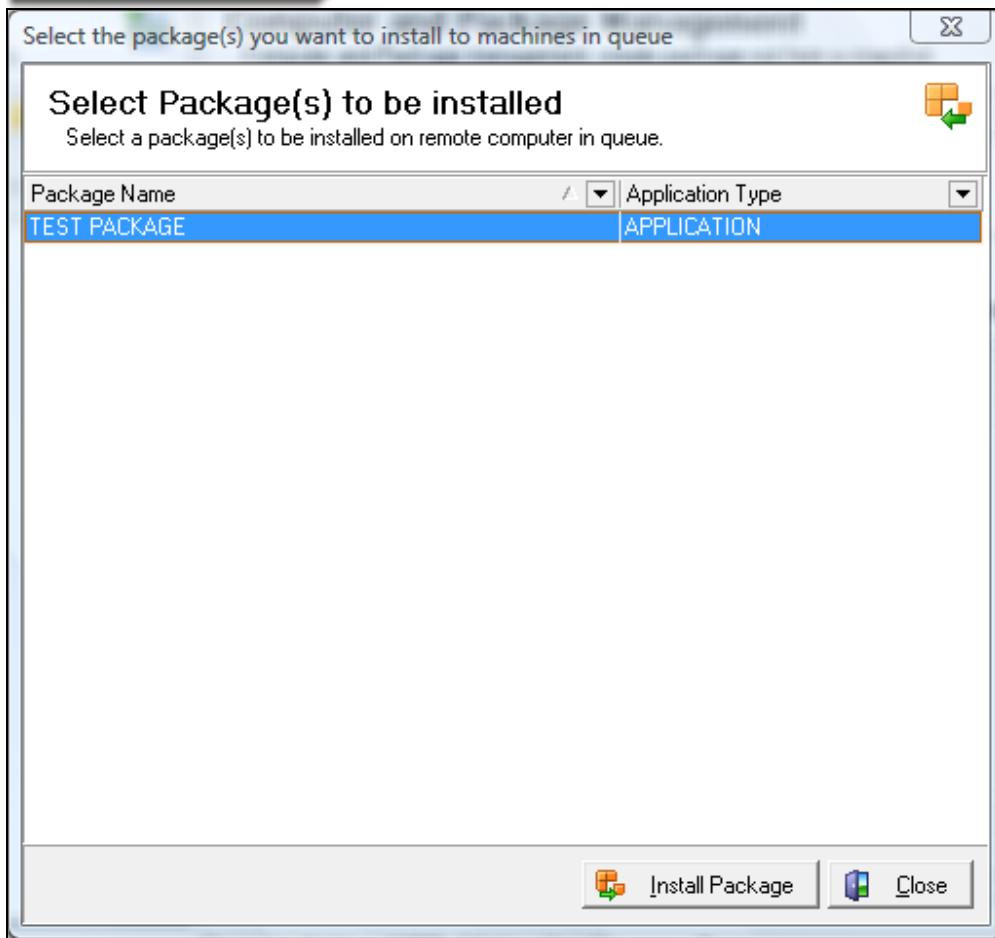
1. Select **Program Management > Package Management > Create Package**.



2. Choose **Execute Action > Package Management > Install Package**.



3. Choose the package you want to install from the list.
4. Click the **Install Package** button.



4. The package will display if the installation was successful, as shown below.



Execute Action ▼ Create Snapshot Package

[Machine Queue](#) [Results](#) [Packages](#) [History](#)

Detailed Results

Detailed results of all program actions. ⬇

Status / Domain

Machine Type Name

Package Installation		
WORKGROUP		
ANGIESOFFICE-PC	APPLICATION	TEST PACKAGE