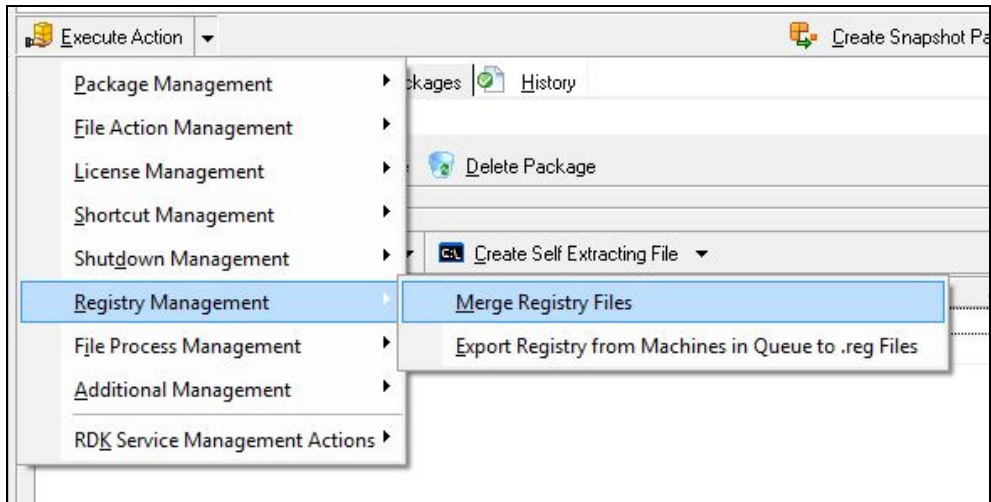


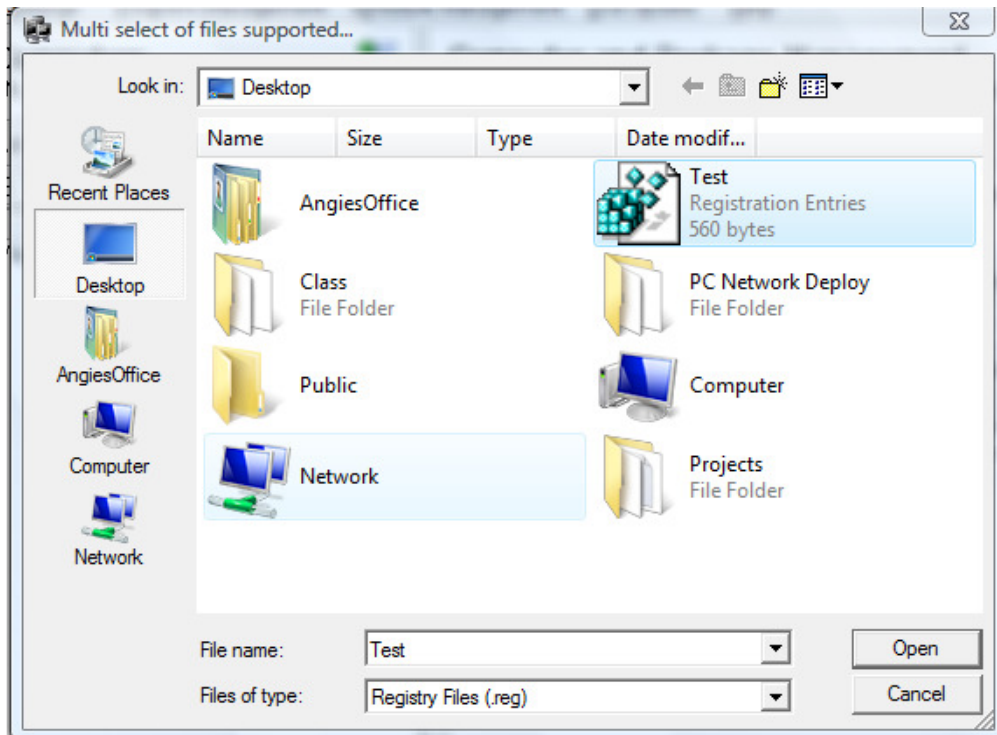


How to Import Registry Files to Network Computers

1. Select **Execute Action > Registry Management > Merge Registry Files**.




2. Highlight the registry file to merge and click the **Open** button.





3. You can see from the Detailed Results window below that the merge was completed successfully.

Detailed Results 

Detailed results of all program actions.

Status Domain

Machine	Type	Name	Description
<input type="checkbox"/> Registry Settings Merged Successfully			
<input type="checkbox"/> WORKGROUP			
ANGIESOFFICE-PC		File : C:\Users\AngiesOffice\Desktop\Test.re	Completed