

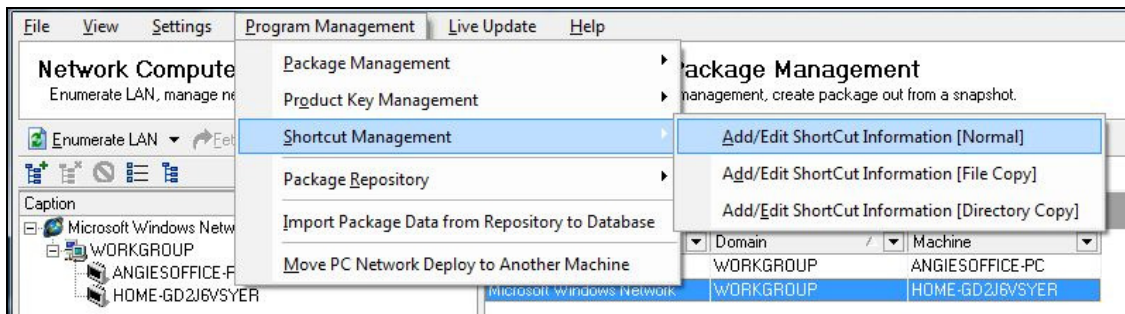


How to Add Shortcuts Info to the Database

Remote PC Network Deploy allows you to create [normal](#), [file](#) and [directory](#) shortcuts.

Normal Shortcuts

1. Select **Program Management > Shortcut Management > Add/Edit Shortcut Information [Normal]**.



2. Click the **Add New** button.



3. Enter the necessary information as shown below.
4. Click the **Add/Update** button.



Add / Update ShortCut Information [Normal]

Normal - ShortCut Information

Shows the normal shortcut information.

Name	Working Directory
Notepad Link	%windir%
Linkname	Arguments
Notepad	
Target Filename	Icon Filename
%windir%\notepad.exe	
Location	Icon Index
rsfDeskTop	0
Show Window	Description
Normal	Notepad Link Demo

5. You can now see that the shortcut has been added.

ShortCut's Database

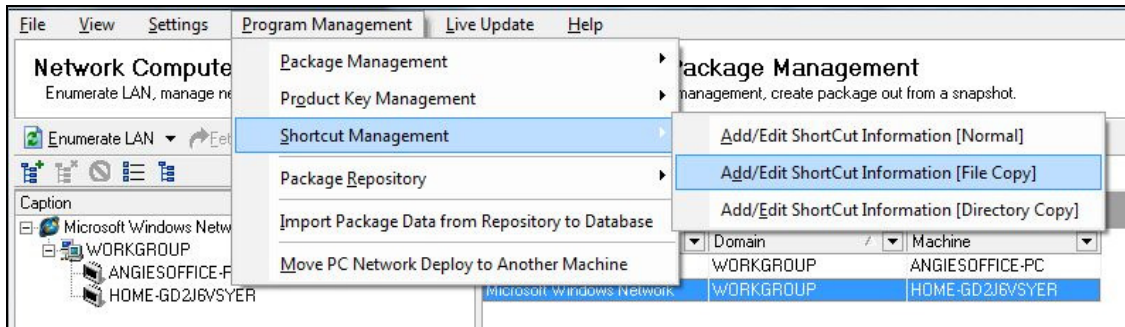
Shows available shortcut's info in current database.

Name	Link Name	Target Filename	Location	Workin
Notepad Link	Notepad	%windir%\notepad.exe	rsfDeskTop	%windir%



File Shortcuts

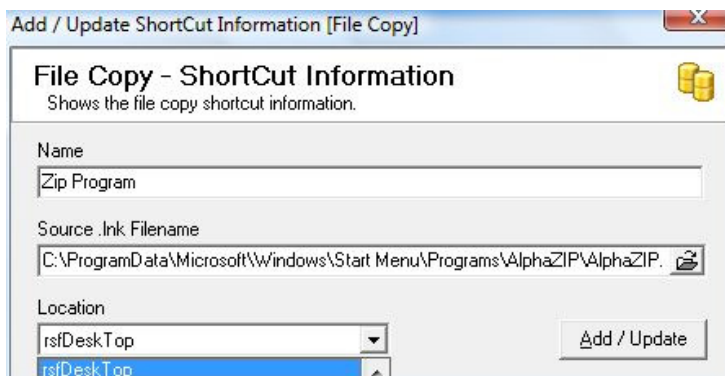
1. Select **Program Management > Shortcut Management > Add/Edit Shortcut Information [File Copy]**.



2. Choose the **Add New** button.



3. Enter a *Name* for the shortcut.
4. Click the **Browse** button to select the file or type the path into the provided box.
5. Choose a location for the shortcut from the drop down menu.
6. Click the **Add/Update** button.



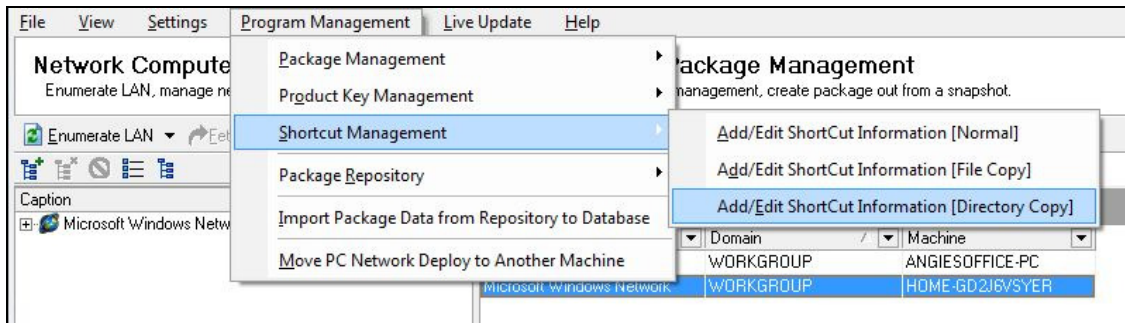
7. You can see from the example below that the shortcut has been added to the system.





Directory Shortcut

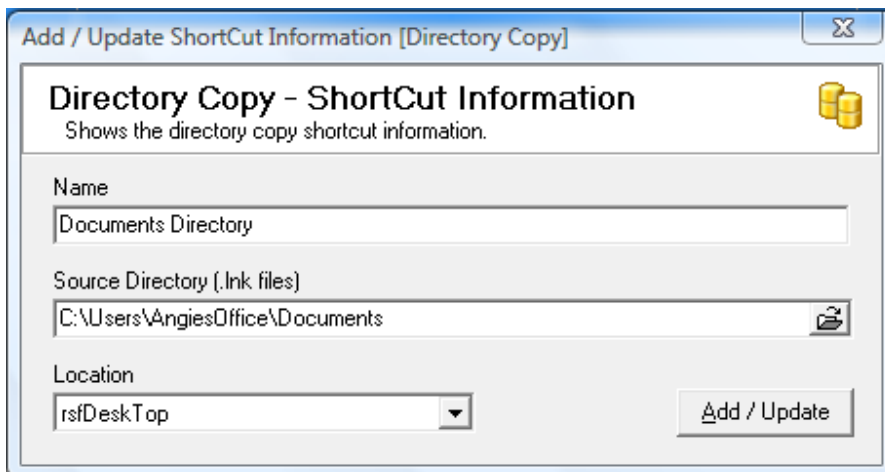
1. Select **Program Management > Shortcut Management > Add/Edit ShortCut Information [Directory Copy]**.



2. Click the **Add New** button.



3. Enter the name for the shortcut.
4. Click the Browse folder to locate the shortcut.
5. Select where you would like the shortcut to be located.



6. When you are finished, click the **Add/Update** button.



