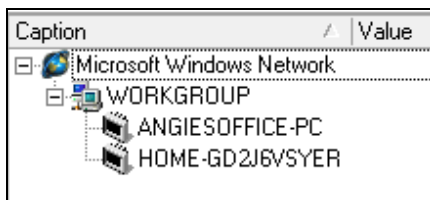




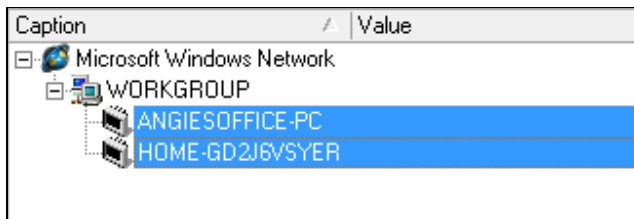
## Drag and Drop Machines into the Machine Queue from the Network Tree

The Drag and Drop feature saves time and makes adding machines from the network tree to the machine queue almost instantaneous.

1. Open the Network Tree so that you are able to see all the machines available that you want to place into the machine queue.



2. Click on the machine(s) you want to move to the machine queue. (*Note: If you wish to move more than one machine, press the CTRL button while clicking on the all the machines you want to include.*)



3. While continuing to press the mouse button drag the items in the network tree over to the machine queue and release the mouse button to drop them. You should now see the machines in the machine queue column.

