

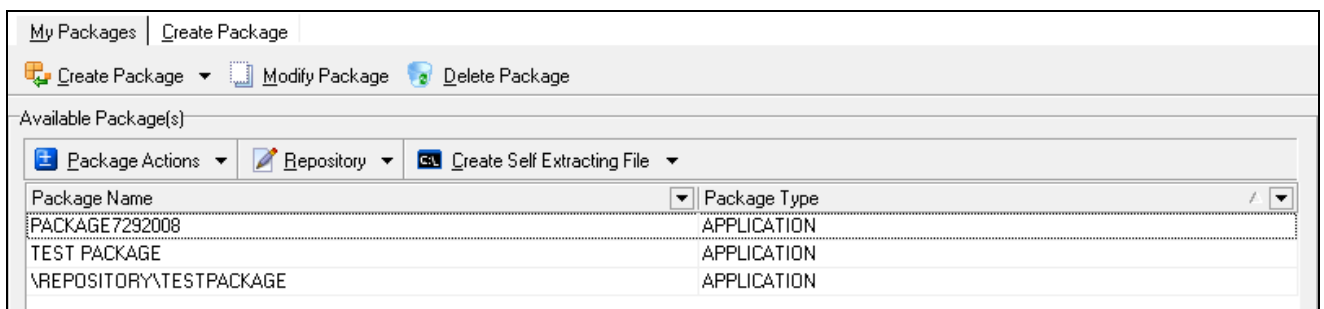


## How to Create a Self Extracting Install File from a Package

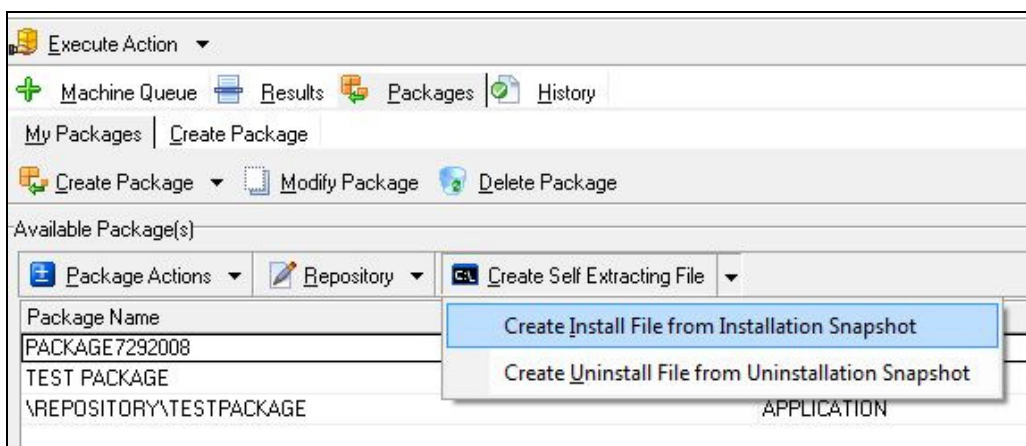
PC Network Deploy allows you to create custom self-extracting installation files that can be pushed to your network computers. This easy to use utility allows you to build a professional installation file within minutes and send the files out to the network computers you specify without any disruption to the users of the networked workstations.

The program also features five areas of customization so that you can build exactly what you want. If the end users need to know that the process is occurring you have the option to create a custom message that will appear on the networked stations. The utility can also be run using alternate credentials so that you can execute the command if the end user does not have the correct privileges to the network. If you would like to have the program create an installation log file the location to save the file can be specified in the Log Settings tab.

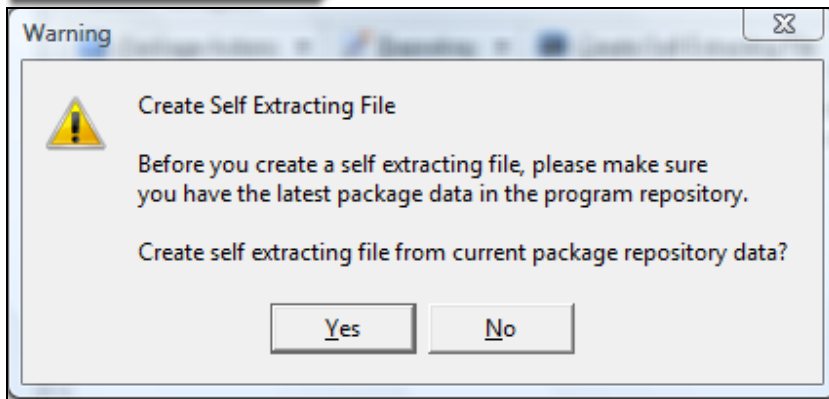
1. Choose the **My Packages** tab.



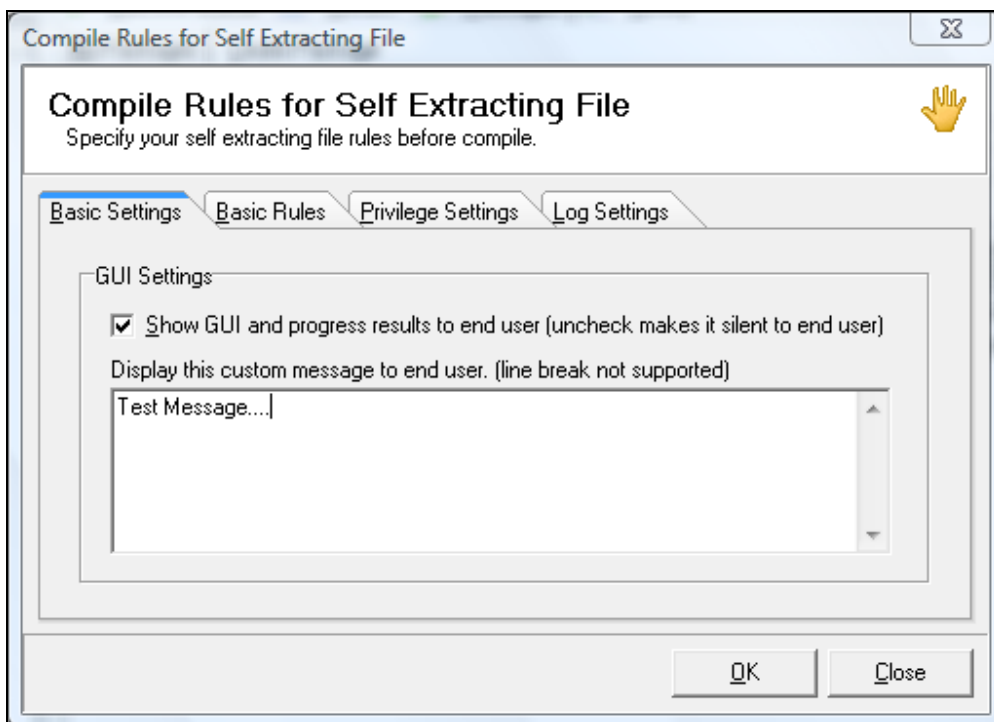
2. Choose **Create Self Extracting File > Create Install File from Installation Snapshot**.



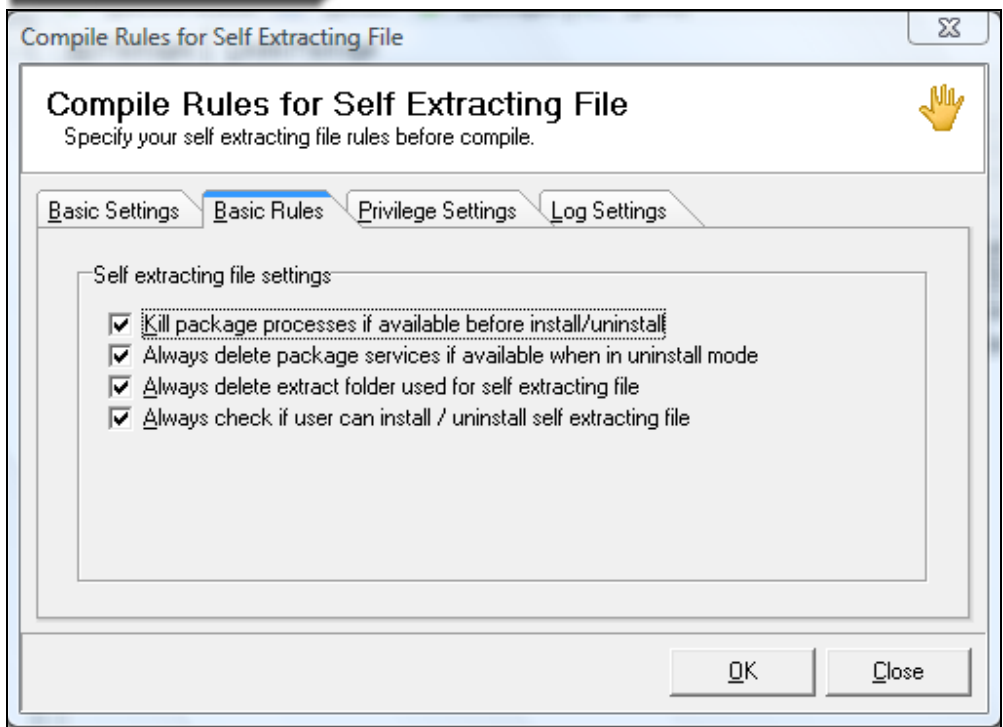
3. Select the **Yes** button if you want to create the self extracting file from the current repository data.



4. The Compile Rules for Self Extracting File window will appear.
5. Under the Basic Settings window you can choose whether the end user sees anything happening from their workstation. If you choose for them to see the progress you can type a custom message that will display on their computer.

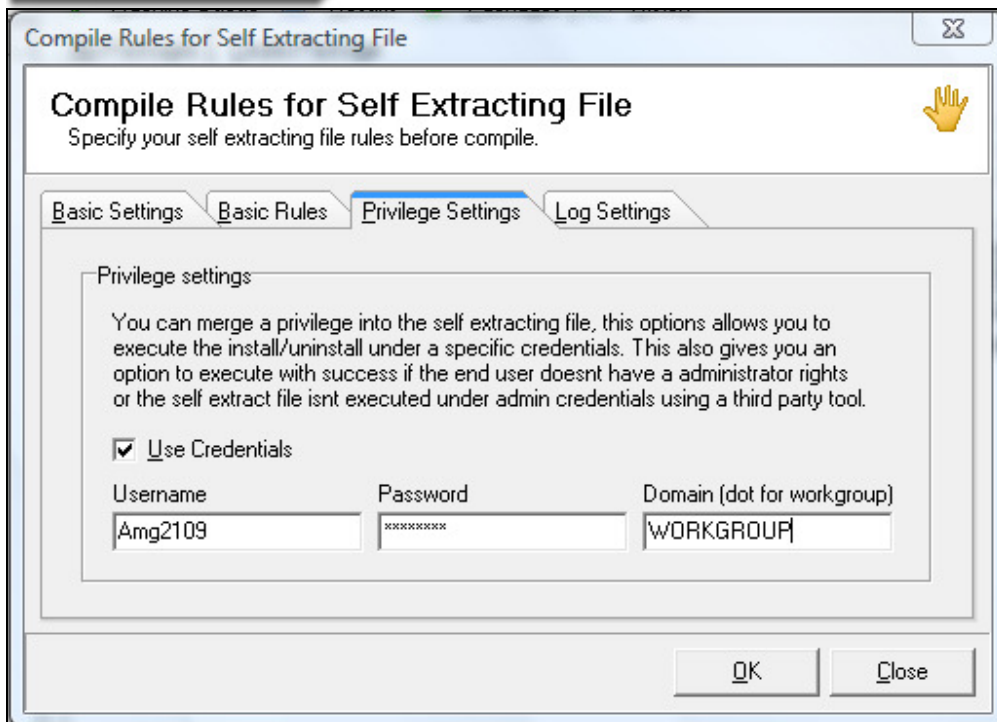


6. Choose the **Basic Rules** tab.
7. Place or remove checkmarks next to the items that you want have active for the compilation.

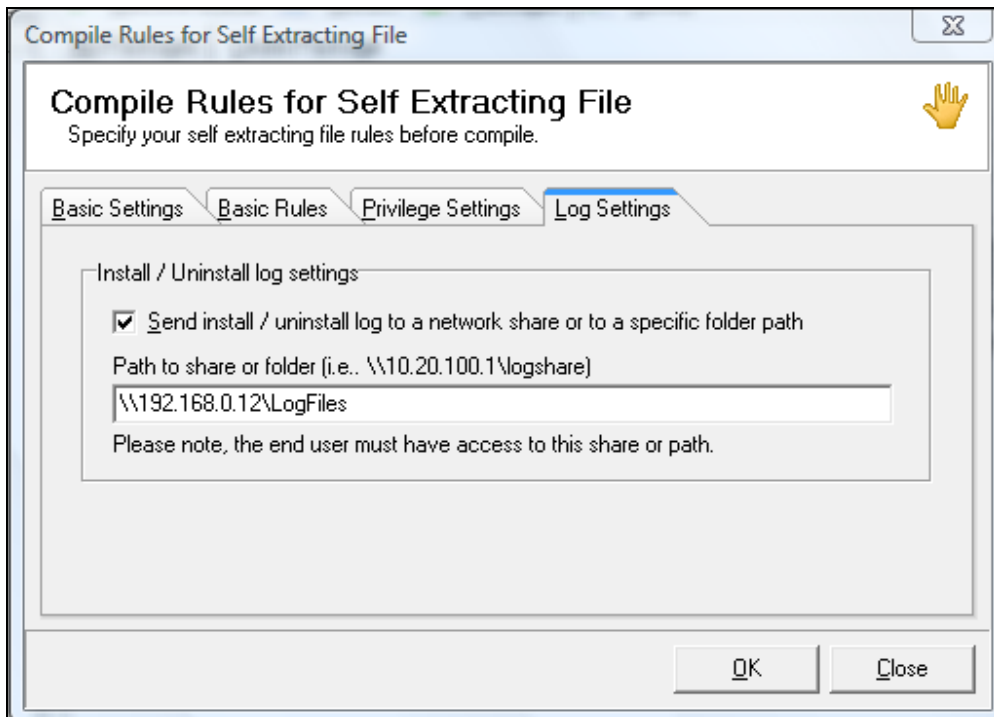


8. Select the **Privileges Settings** tab.

9. You can opt to merge a privilege into the self extracting file by placing a checkmark in the Use Credentials checkbox. Enter the Username, password, and domain in order to setup the privilege settings.



10. Select the **Log Settings** tab if you want to send a log to the network share.
11. Place a checkmark in the checkbox and enter a path into the box provided.
12. Click **Ok**.





13. The Installation file by default should install into the **Network Deploy > RDK Standalone File folder shown below.**

