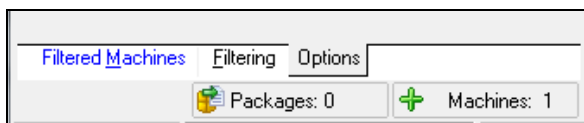




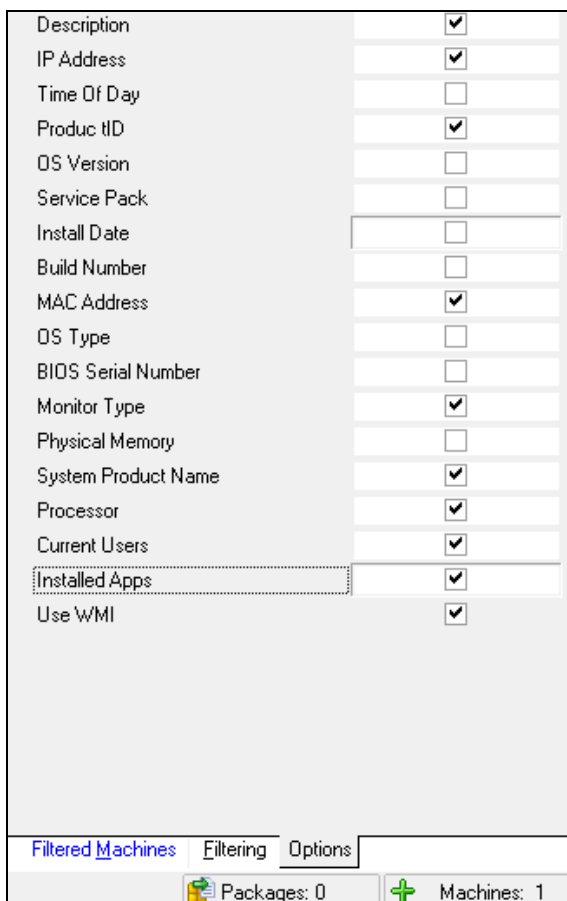
How to configure scanned data from the Options tab

The Options tab in the main PC Network Deploy window allows you to select checkboxes based on the information you want to gather from the remote workstations on the network. The steps outlined below will assist you in setting the options for your scan.

1. Select the **Options** tab in the bottom left corner.

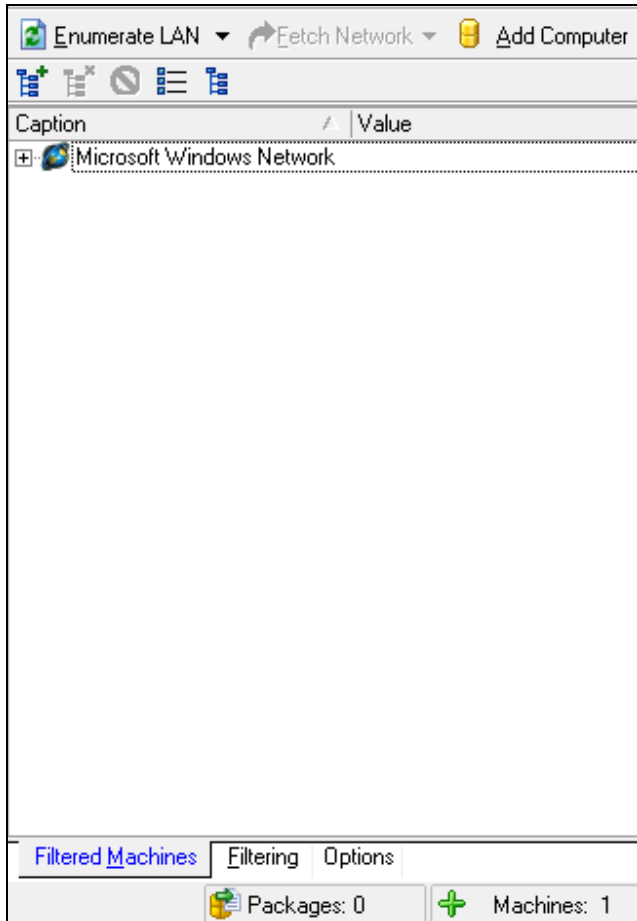


2. Place a checkmark or remove checkmarks based on what information you want from each station on the network that you have included in the search.

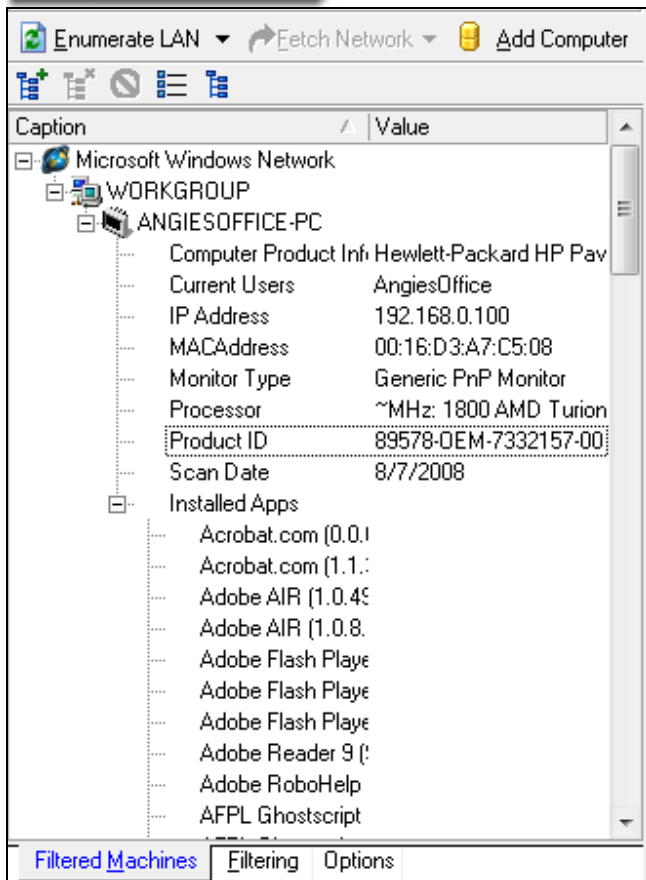




3. Right-click and select **Enumerate LAN** to run a scan on all machines on the network or right-click on the machine name and select Scan Selected.



4. Depending on the options you selected it could take a moment to generate your results.
5. The results will display in the network tree window similar to the window below.



6. Once the scan has completed, you can create a Filter for the results.

