

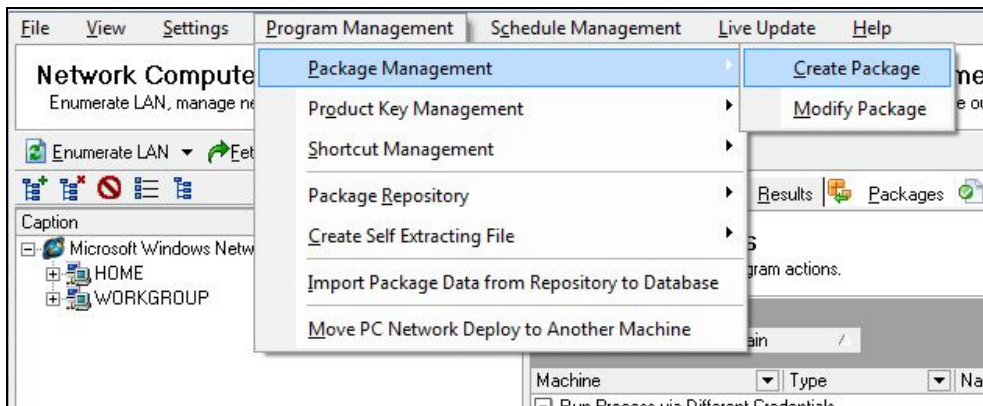


## How to Capture and Monitor Original Setup to a Program Package

Packages are created by taking before screenshots, making the system changes, and then taking an after snapshot. Once you have completed those steps you can create a package that can be used to install and/or uninstall applications and/or system changes to an entire network at one time.

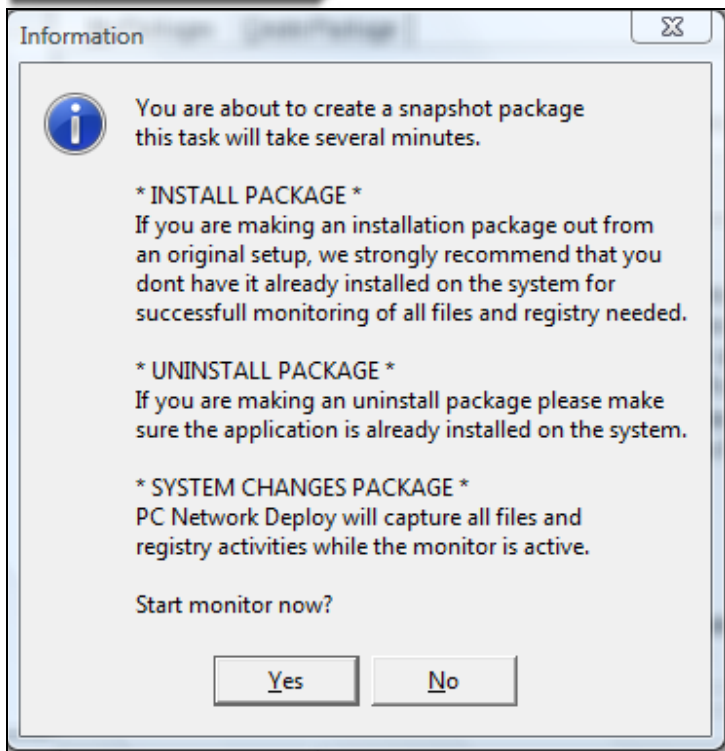
When you create a package you will have to select an exist rule to check on the installation/uninstallation actions. If you installing a package the rule must not match on the remote computers so your package will be installed. If you are uninstalling a package your rule must exist so the package will be uninstalled from remote computers.

1. Select **Program Management > Package Management > Create Package**.

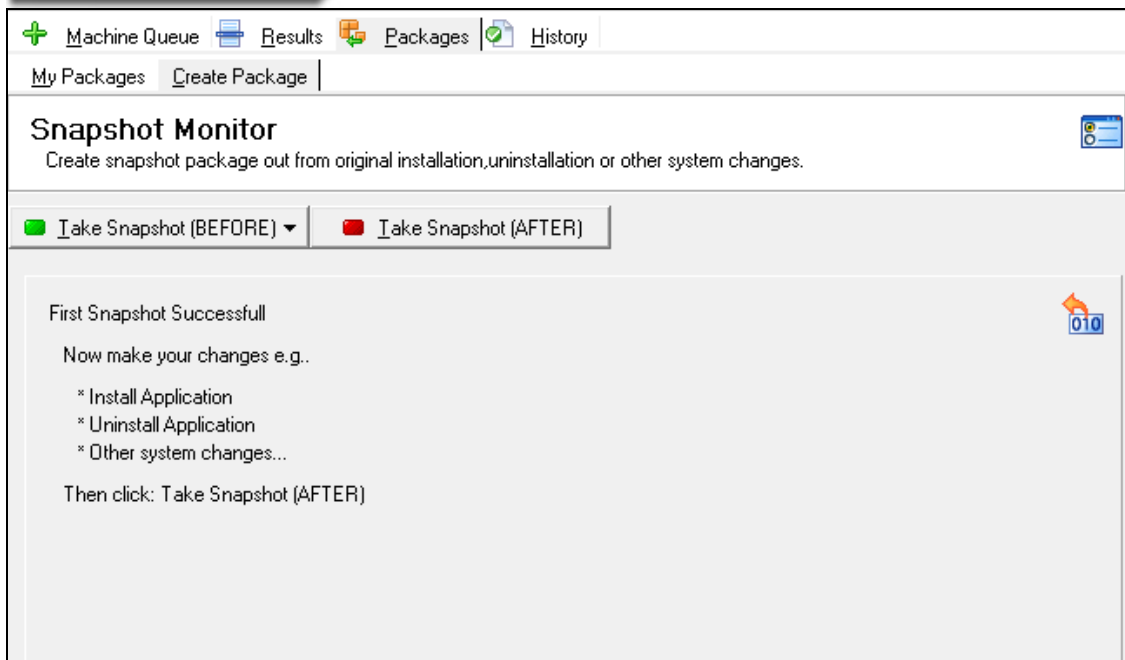


2. Select **Take Snapshot BEFORE > Take Snapshot of an Installation or Uninstallation Modification > My snapshot will require a reboot or My snapshot will not require a reboot**.

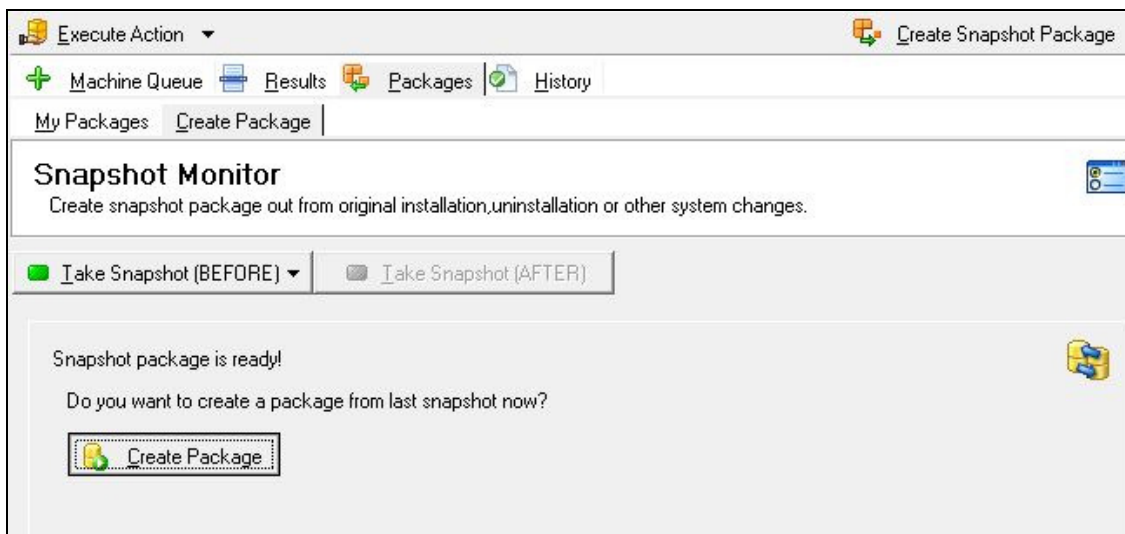
3. Click **Yes** to start the Installation Snapshot.



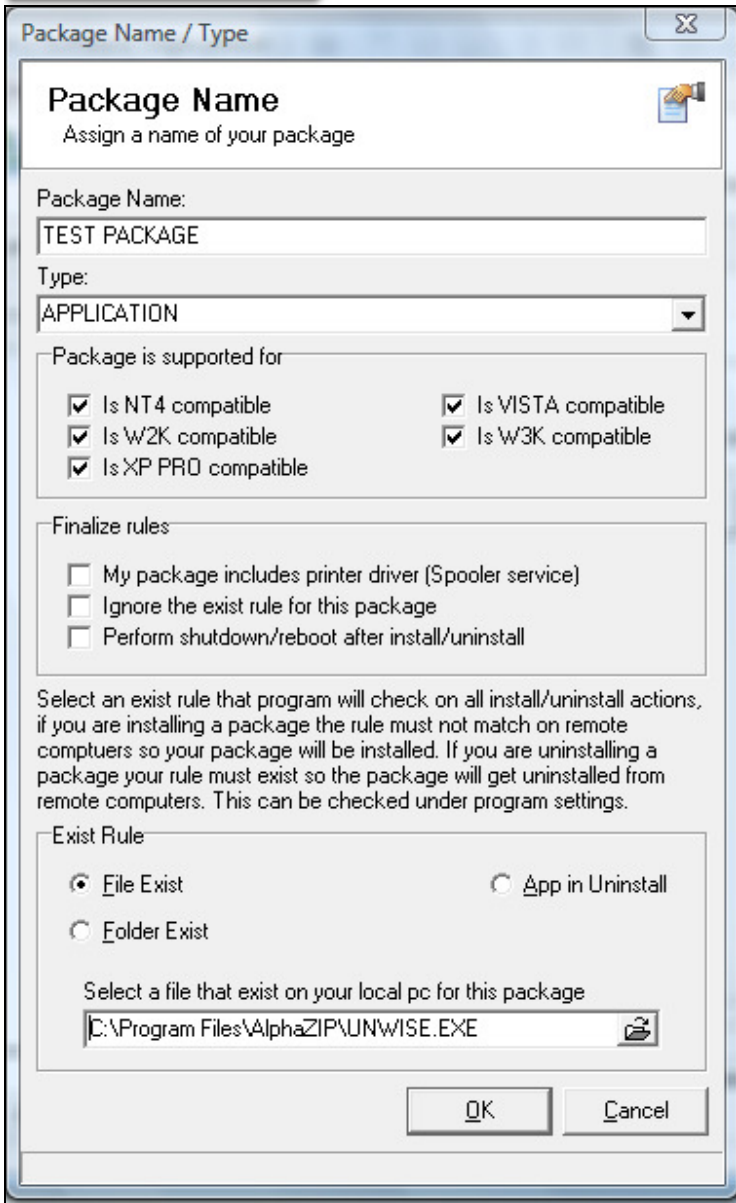
4. When the snapshot is completed you will receive a message that the process was successful.
5. Make the necessary changes to the system and then select to **Take a Snapshot AFTER.**



6. Click **Create Package**.



7. Enter a name for the package.
8. Select the type of package from the drop down menu.
9. Select any finalization rules if necessary.
10. Choose an Exist rule and navigate to the package using the Browse button.



11. Click **Ok** when finished.