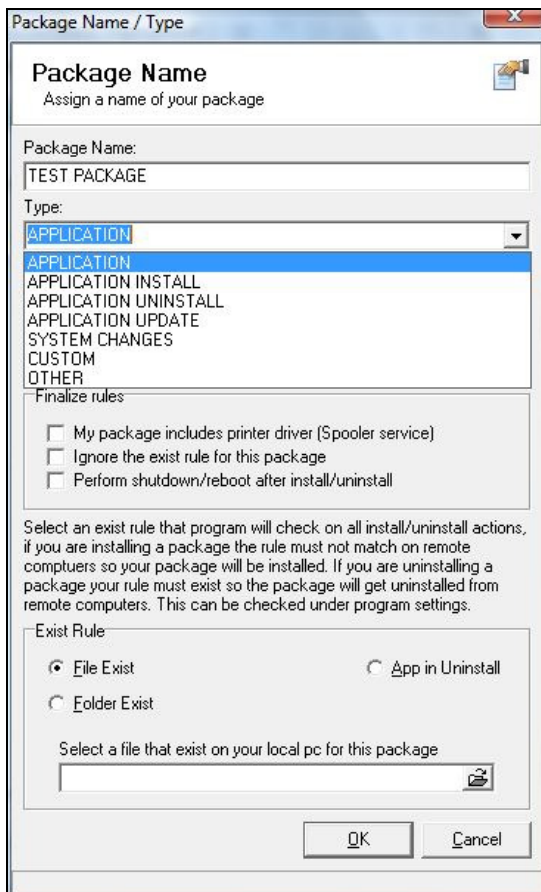




How to Assign Correct Settings to a Package After Monitoring

Once you have created the Before and After snapshots and selected to Create a Package you will have the option to assign settings to the package using the steps outlined below.

1. After you have selected to create a package, the Package Name/Type window will appear allowing you to assign settings.
2. Enter a package name.
3. Choose the package type from the drop down menu as shown below.
4. Place a checkmark in the appropriate boxes under the Finalize rules window. This section allows you to include printer drivers, ignore the exist rule and/or perform a shutdown or reboot after the installation or uninstallation takes place.
5. Select an exist rule that the program will check during the installation or uninstallation actions. The rule must not match the package on the remote computers.
6. Click the **Browse** button to search for the file that you want to use.



7. Click **Ok** when finished.