

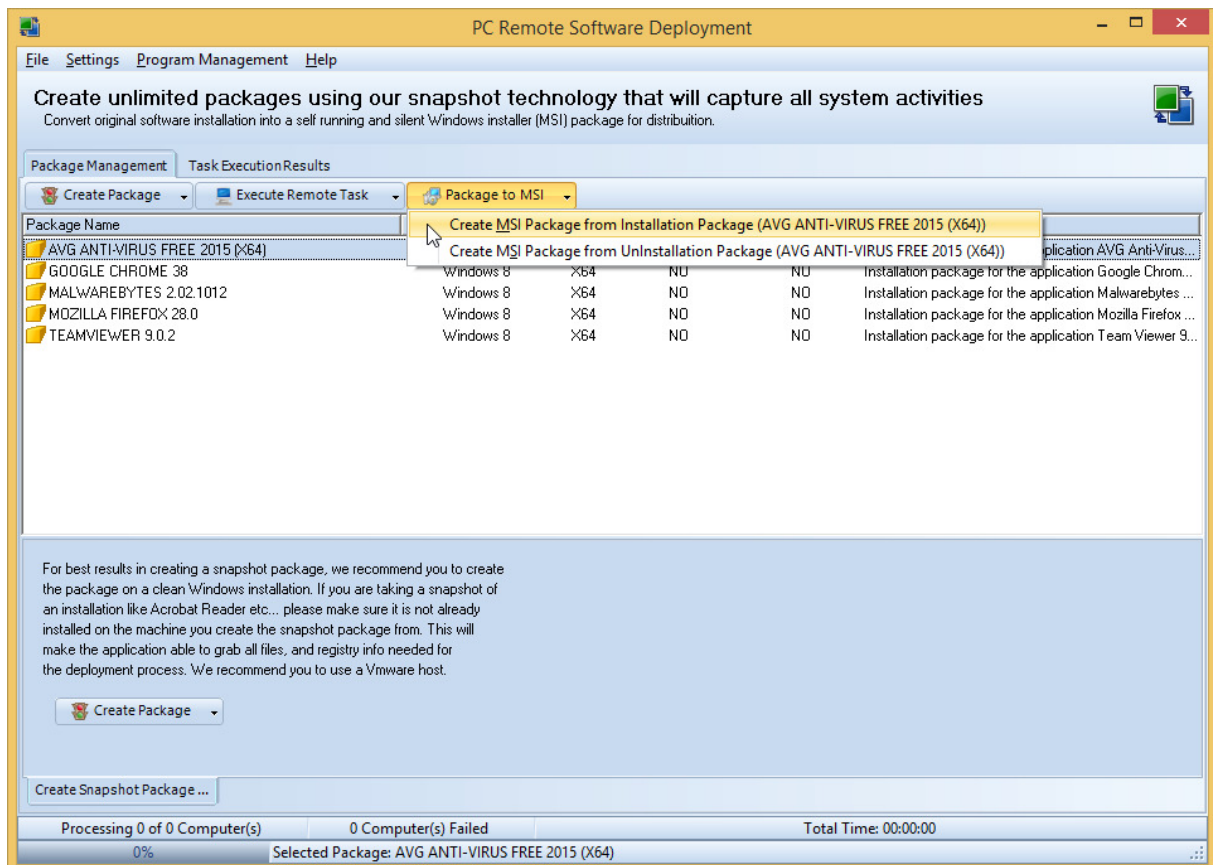
## Convert package to windows installer msi package for installation

In this guide we will explain how you can convert existing monitored package available in repository storage to a Windows installer MSI package for installation across your network. The created MSI package is compatible with the latest Windows installer standards and can be deployed remotely using programs like **SCCM**, **GPO** and any other third party utilities that supports remote deployments of MSI install packages.

It is very important before you continue to evaluate this tutorial to make sure you are running the latest version of the **PC Remote Software Deployment** product.

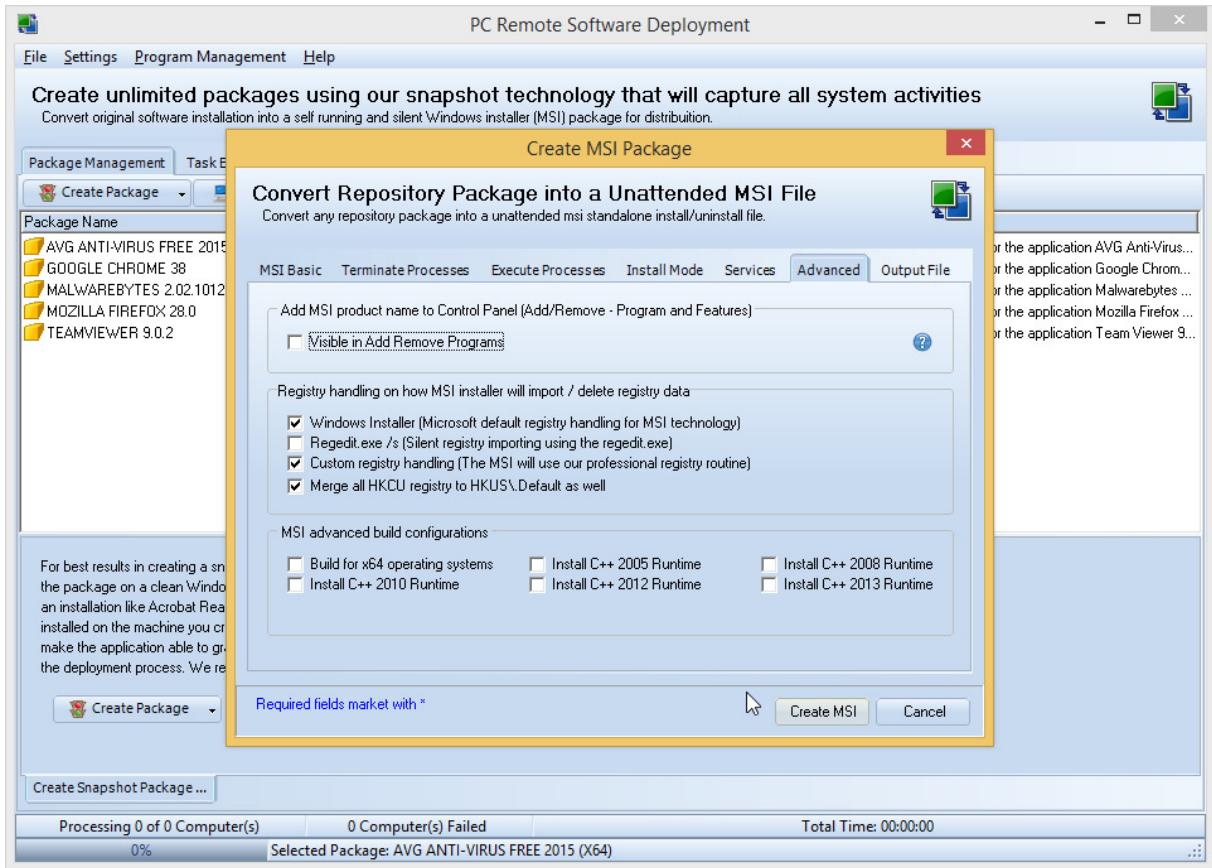
You can download the latest version here: **PC Remote Software Deployment - Download Link**  
<http://www.remotepctools.com/download/pcremotesoftwaredeployment/pcremotesoftwaredeploymentsetup.exe>

To convert existing package into a self-installing Windows Installer msi file you first need to select the package you want to create msi file from then click on the Package to MSI button. Then select the Create MSI Package from Installation item to create a installation msi file.

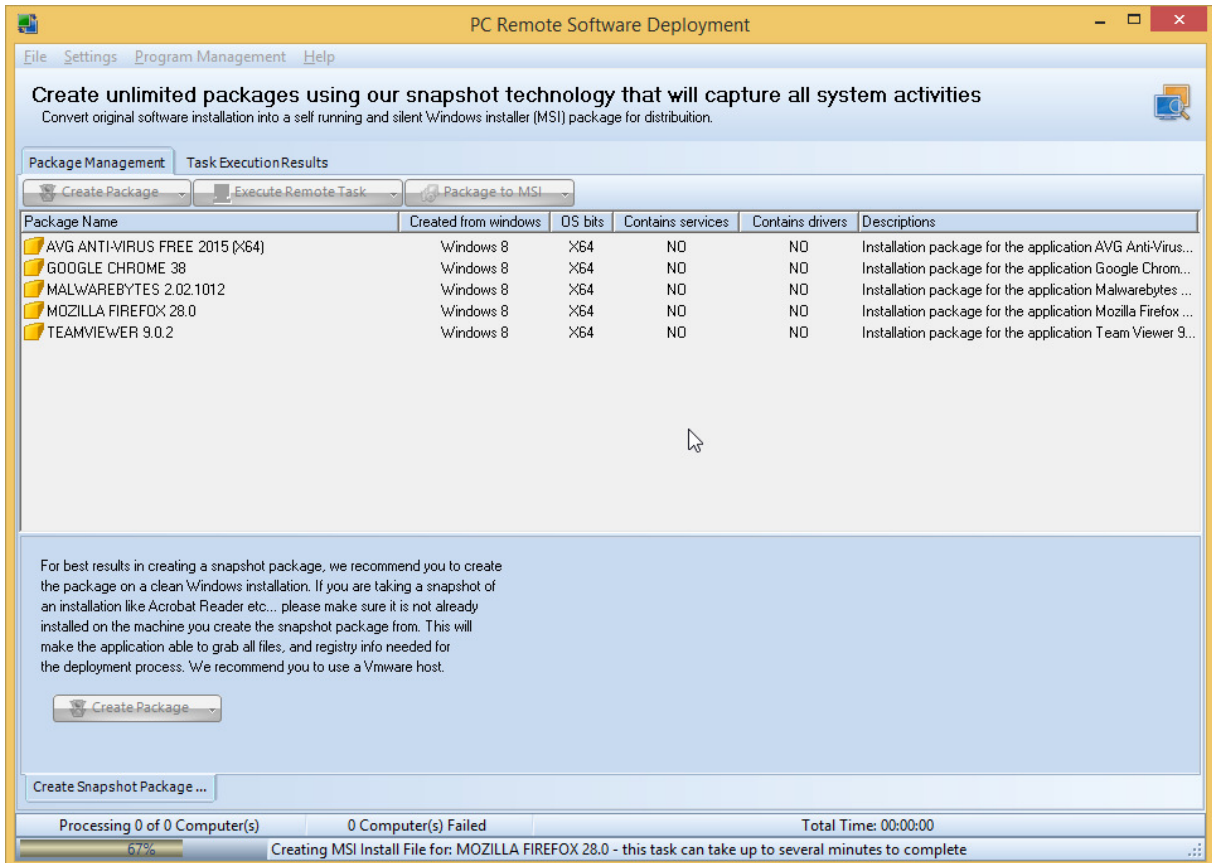


Next you will get up the Create MSI Package dialog where you can configure the Windows Installer msi file. We recommend you to use the default settings. If your package requires VC runtime library to be installed you can check the version needed.

To create the Windows Installer msi file click next on the Create MSI button.



Creating MSI file in progress.



Now the MSI file has been created and is ready for deployment across the network. The created msi file is supported for distribution with **Group Policy** or any other third party applications that supports deploying of a Windows Installer msi files.

